



UBE2H Polyclonal Antibody

Catalog No	YP-Ab-06362
Isotype	IgG
Reactivity	Human;Mouse
Applications	WB;ELISA
Gene Name	UBE2H
Protein Name	Ubiquitin-conjugating enzyme E2 H (EC 6.3.2.19) (UbcH2) (Ubiquitin carrier protein H) (Ubiquitin-conjugating enzyme E2-20K) (Ubiquitin-protein ligase H)
Immunogen	Synthesized peptide derived from part region of human protein
Specificity	UBE2H Polyclonal Antibody detects endogenous levels of protein.
Formulation	Liquid in PBS containing 50% glycerol, and 0.02% sodium azide.
Source	Polyclonal, Rabbit,IgG
Purification	The antibody was affinity-purified from rabbit antiserum by affinity-chromatography using epitope-specific immunogen.
Dilution	WB 1:500-2000 ELISA 1:5000-20000
Concentration	1 mg/ml
Purity	≥90%
Storage Stability	-20°C/1 year
Synonyms	
Observed Band	20kD
Cell Pathway	cytoplasm,
Tissue Specificity	Placenta,
Function	catalytic activity:ATP + ubiquitin + protein lysine = AMP + diphosphate + protein N-ubiquityllysine.,function:Catalyzes the covalent attachment of ubiquitin to other proteins. Capable, in vitro, to ubiquitinate histone H2A.,pathway:Protein modification; protein ubiquitination.,similarity:Belongs to the ubiquitin-conjugating enzyme family.,
Background	The modification of proteins with ubiquitin is an important cellular mechanism for targeting abnormal or short-lived proteins for degradation. Ubiquitination involves at least three classes of enzymes: ubiquitin-activating enzymes, or E1s, ubiquitin-conjugating enzymes, or E2s, and ubiquitin-protein ligases, or E3s. This gene encodes a member of the E2 ubiquitin-conjugating enzyme family. The encoded protein sequence is 100% identical to the mouse homolog and 98% identical to the frog and zebrafish homologs. Three alternatively spliced transcript variants have been found for this gene and they encode distinct isoforms. [provided by RefSeq, Feb 2011],

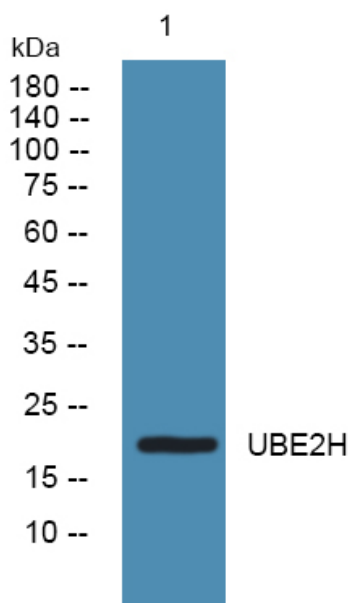
**matters needing attention**

Avoid repeated freezing and thawing!

Usage suggestions

This product can be used in immunological reaction related experiments. For more information, please consult technical personnel.

Products Images



Western blot analysis of lysates from KB cells, primary antibody was diluted at 1:1000, 4°over night