



UB2E3 Polyclonal Antibody

Catalog No	YP-Ab-06360
Isotype	IgG
Reactivity	Human;Mouse
Applications	WB;ELISA
Gene Name	UBE2E3 UBCE4 UBCH9
Protein Name	Ubiquitin-conjugating enzyme E2 E3 (EC 6.3.2.19) (UbcH9) (Ubiquitin carrier protein E3) (Ubiquitin-conjugating enzyme E2-23 kDa) (Ubiquitin-protein ligase E3)
Immunogen	Synthesized peptide derived from part region of human protein
Specificity	UB2E3 Polyclonal Antibody detects endogenous levels of protein.
Formulation	Liquid in PBS containing 50% glycerol, and 0.02% sodium azide.
Source	Polyclonal, Rabbit,IgG
Purification	The antibody was affinity-purified from rabbit antiserum by affinity-chromatography using epitope-specific immunogen.
Dilution	WB 1:500-2000 ELISA 1:5000-20000
Concentration	1 mg/ml
Purity	≥90%
Storage Stability	-20°C/1 year
Synonyms	
Observed Band	22kD
Cell Pathway	Nucleus . Cytoplasm . Shuttles between the nucleus and cytoplasm in a IPO11-dependent manner.
Tissue Specificity	Ubiquitously expressed at low levels. Highly expressed in skeletal muscle.
Function	catalytic activity:ATP + ubiquitin + protein lysine = AMP + diphosphate + protein N-ubiquityllysine.,function:Catalyzes the covalent attachment of ubiquitin to other proteins. Participates in the regulation of transepithelial sodium transport in renal cells. May be involved in cell growth arrest.,pathway:Protein modification; protein ubiquitination.,similarity:Belongs to the ubiquitin-conjugating enzyme family.,subcellular location:Shuttles between the nucleus and cytoplasm in a IPO11-dependent manner.,subunit:The ubiquitin-loaded form interacts specifically with importin-11 (IPO11), leading to its import into the nucleus (By similarity). Interacts with NEDD4L.,tissue specificity:Ubiquitously expressed at low levels. Highly expressed in skeletal muscle.,
Background	The modification of proteins with ubiquitin is an important cellular mechanism for targeting abnormal or short-lived proteins for degradation. Ubiquitination involves at least three classes of enzymes: ubiquitin-activating enzymes, or E1s, ubiquitin-conjugating enzymes, or E2s, and ubiquitin-protein ligases, or E3s. This



gene encodes a member of the E2 ubiquitin-conjugating enzyme family. The encoded protein shares 100% sequence identity with the mouse and rat counterparts, which indicates that this enzyme is highly conserved in eukaryotes. Multiple alternatively spliced transcript variants encoding the same protein have been found for this gene. [provided by RefSeq, Jun 2013],

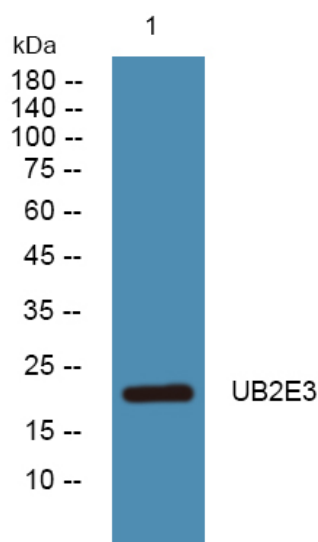
matters needing attention

Avoid repeated freezing and thawing!

Usage suggestions

This product can be used in immunological reaction related experiments. For more information, please consult technical personnel.

Products Images



Western blot analysis of lysates from SW480 cells, primary antibody was diluted at 1:1000, 4° over night