

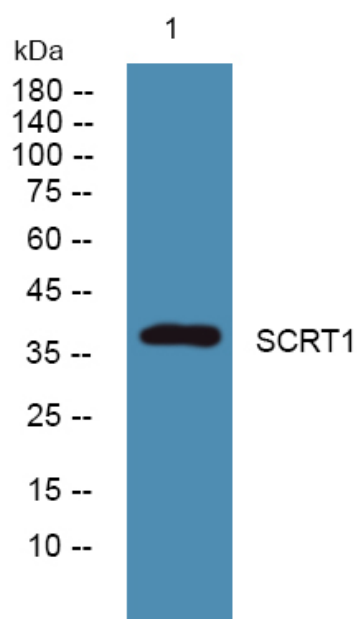


SCRT1 Polyclonal Antibody

Catalog No	YP-Ab-06311
Isotype	IgG
Reactivity	Human;Mouse
Applications	WB;ELISA
Gene Name	SCRT1
Protein Name	Transcriptional repressor scratch 1 (Scratch homolog 1 zinc finger protein) (SCRT) (Scratch 1) (hScrt)
Immunogen	Synthesized peptide derived from part region of human protein
Specificity	SCRT1 Polyclonal Antibody detects endogenous levels of protein.
Formulation	Liquid in PBS containing 50% glycerol, and 0.02% sodium azide.
Source	Polyclonal, Rabbit,IgG
Purification	The antibody was affinity-purified from rabbit antiserum by affinity-chromatography using epitope-specific immunogen.
Dilution	WB 1:500-2000 ELISA 1:5000-20000
Concentration	1 mg/ml
Purity	≥90%
Storage Stability	-20°C/1 year
Synonyms	
Observed Band	38kD
Cell Pathway	Nucleus .
Tissue Specificity	Brain specific.
Function	domain:The N-terminal non zinc-finger region mediates the repressor activity.,function:Transcriptional repressor that binds E-box motif CAGGTG. Can modulate the action of basic helix-loop-helix (bHLH) transcription factors, critical for neuronal differentiation.,similarity:Belongs to the snail C2H2-type zinc-finger protein family.,similarity:Contains 5 C2H2-type zinc fingers.,tissue specificity:Brain specific.,
Background	This gene encodes a C2H2-type zinc finger transcriptional repressor that binds to E-box motifs. The encoded protein may promote neural differentiation and may be involved in cancers with neuroendocrine features. [provided by RefSeq, Jul 2013],
matters needing attention	Avoid repeated freezing and thawing!

**Usage suggestions**

This product can be used in immunological reaction related experiments. For more information, please consult technical personnel.

Products Images

Western blot analysis of lysates from DU145 cells, primary antibody was diluted at 1:1000, 4° over night