



PURA Polyclonal Antibody

Catalog No	YP-Ab-06308
Isotype	IgG
Reactivity	Human;Rat;Mouse
Applications	WB;ELISA
Gene Name	PURA PUR1
Protein Name	Transcriptional activator protein Pur-alpha (Purine-rich single-stranded DNA-binding protein alpha)
Immunogen	Synthesized peptide derived from part region of human protein
Specificity	PURA Polyclonal Antibody detects endogenous levels of protein.
Formulation	Liquid in PBS containing 50% glycerol, and 0.02% sodium azide.
Source	Polyclonal, Rabbit,IgG
Purification	The antibody was affinity-purified from rabbit antiserum by affinity-chromatography using epitope-specific immunogen.
Dilution	WB 1:500-2000 ELISA 1:5000-20000
Concentration	1 mg/ml
Purity	≥90%
Storage Stability	-20°C/1 year
Synonyms	
Observed Band	35kD
Cell Pathway	Nucleus.
Tissue Specificity	Brain,Epithelium,Fetal liver,PCR rescued clones,
Function	function:This is a probable transcription activator that specifically binds the purine-rich single strand of the PUR element located upstream of the MYC gene. May play a role in the initiation of DNA replication and in recombination.,similarity:Belongs to the PUR DNA-binding protein family.,subunit:Homodimer, heterodimer with PURB and heterotrimer with PURB and YBX1/Y-box protein 1.,
Background	This gene product is a sequence-specific, single-stranded DNA-binding protein. It binds preferentially to the single strand of the purine-rich element termed PUR, which is present at origins of replication and in gene flanking regions in a variety of eukaryotes from yeasts through humans. Thus, it is implicated in the control of both DNA replication and transcription. Deletion of this gene has been associated with myelodysplastic syndrome and acute myelogenous leukemia. [provided by RefSeq, Jul 2008],

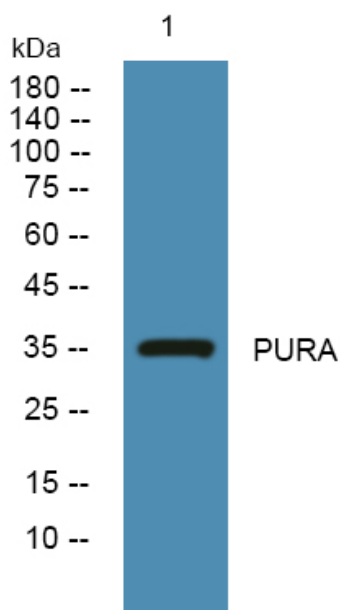
**matters needing attention**

Avoid repeated freezing and thawing!

Usage suggestions

This product can be used in immunological reaction related experiments. For more information, please consult technical personnel.

Products Images



Western blot analysis of lysates from K562 cells, primary antibody was diluted at 1:1000, 4° over night