

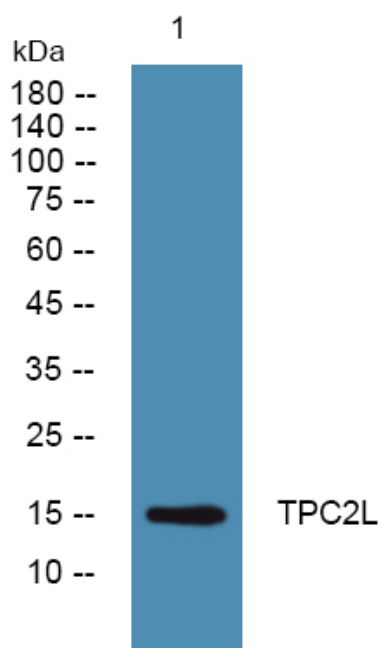


TPC2L Polyclonal Antibody

Catalog No	YP-Ab-06286
Isotype	IgG
Reactivity	Human;Rat;Mouse
Applications	WB;ELISA
Gene Name	TRAPPC2L HSPC126
Protein Name	Trafficking protein particle complex subunit 2-like protein
Immunogen	Synthesized peptide derived from part region of human protein
Specificity	TPC2L Polyclonal Antibody detects endogenous levels of protein.
Formulation	Liquid in PBS containing 50% glycerol, and 0.02% sodium azide.
Source	Polyclonal, Rabbit,IgG
Purification	The antibody was affinity-purified from rabbit antiserum by affinity-chromatography using epitope-specific immunogen.
Dilution	WB 1:500-2000 ELISA 1:5000-20000
Concentration	1 mg/ml
Purity	≥90%
Storage Stability	-20°C/1 year
Synonyms	
Observed Band	15kD
Cell Pathway	Cytoplasm, perinuclear region . Endoplasmic reticulum . Golgi apparatus .
Tissue Specificity	Expressed in testis, liver, bladder, lung, spleen and brain, several cell lines and primary chondrocytes cell line.
Function	similarity:Belongs to the TRAPP small subunits family. Sedlin subfamily.,
Background	This gene encodes a protein that interacts with the tethering factor trafficking protein particle (TRAPP complex). TRAPP complexes mediate the contact between vesicles and target membranes, and thus, are involved in vesicle-mediated transport of proteins and lipids. The encoded protein is related to the X-linked trafficking protein particle complex 2. A related pseudogene is located on the X chromosome. Alternative splicing results in multiple transcript variants encoding different isoforms. [provided by RefSeq, Jan 2016],
matters needing attention	Avoid repeated freezing and thawing!
Usage suggestions	This product can be used in immunological reaction related experiments. For more information, please consult technical personnel.



Products Images



Western blot analysis of lysates from SW480 cells,
primary antibody was diluted at 1:1000, 4° over night