

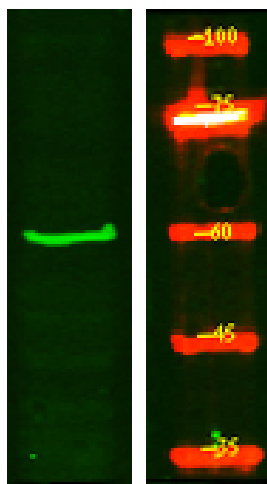


TIGD2 Polyclonal Antibody

Catalog No	YP-Ab-06278
Isotype	IgG
Reactivity	Human;Rat;Mouse;
Applications	WB;ELISA
Gene Name	TIGD2
Protein Name	Tigger transposable element-derived protein 2
Immunogen	Synthesized peptide derived from part region of human protein
Specificity	TIGD2 Polyclonal Antibody detects endogenous levels of protein.
Formulation	Liquid in PBS containing 50% glycerol, and 0.02% sodium azide.
Source	Polyclonal, Rabbit,IgG
Purification	The antibody was affinity-purified from rabbit antiserum by affinity-chromatography using epitope-specific immunogen.
Dilution	WB 1:500-2000 ELISA 1:5000-20000
Concentration	1 mg/ml
Purity	≥90%
Storage Stability	-20°C/1 year
Synonyms	
Observed Band	57kD
Cell Pathway	Nucleus .
Tissue Specificity	
Function	similarity:Belongs to the tigger transposable element derived protein family.,similarity:Contains 1 DDE domain.,similarity:Contains 1 HTH CENPB-type DNA-binding domain.,similarity:Contains 1 HTH psq-type DNA-binding domain.,
Background	The protein encoded by this gene belongs to the tigger subfamily of the pogo superfamily of DNA-mediated transposons in humans. These proteins are related to DNA transposons found in fungi and nematodes, and more distantly to the Tc1 and mariner transposases. They are also very similar to the major mammalian centromere protein B. The exact function of this gene is not known. [provided by RefSeq, Jul 2008],
matters needing attention	Avoid repeated freezing and thawing!
Usage suggestions	This product can be used in immunological reaction related experiments. For more information, please consult technical personnel.



Products Images



Western Blot analysis of HEK293 lysis, using primary antibody at 1:1000 dilution. Secondary antibody(catalog#:RS23920) was diluted at 1:10000