



SYT5 Polyclonal Antibody

Catalog No	YP-Ab-06260
Isotype	IgG
Reactivity	Human;Rat;Mouse
Applications	WB;ELISA
Gene Name	SYT5
Protein Name	Synaptotagmin-5 (Synaptotagmin V) (SytV)
Immunogen	Synthesized peptide derived from part region of human protein
Specificity	SYT5 Polyclonal Antibody detects endogenous levels of protein.
Formulation	Liquid in PBS containing 50% glycerol, and 0.02% sodium azide.
Source	Polyclonal, Rabbit,IgG
Purification	The antibody was affinity-purified from rabbit antiserum by affinity-chromatography using epitope-specific immunogen.
Dilution	WB 1:500-2000 ELISA 1:5000-20000
Concentration	1 mg/ml
Purity	≥90%
Storage Stability	-20°C/1 year
Synonyms	
Observed Band	42kD
Cell Pathway	Cytoplasmic vesicle, secretory vesicle, synaptic vesicle membrane ; Single-pass membrane protein . Recycling endosome membrane ; Single-pass membrane protein . In mast cells, localizes to the endocytic recycling compartment. .
Tissue Specificity	Brain,
Function	cofactor: Binds 3 calcium ions per subunit. The ions are bound to the C2 domains.,function: May be involved in Ca(2+)-dependent exocytosis of secretory vesicles through Ca(2+) and phospholipid binding to the C2 domain or may serve as Ca(2+) sensors in the process of vesicular trafficking and exocytosis. Regulates the Ca(2+)-dependent secretion of norepinephrine in PC12 cells. Required for export from the endocytic recycling compartment to the cell surface.,similarity: Belongs to the synaptotagmin family.,similarity: Contains 2 C2 domains.,subcellular location: In mast cells, localizes to the endocytic recycling compartment.,subunit: Homodimer. Can also form heterodimers. Interacts with both alpha- and beta-tubulin.,
Background	Synaptotagmins, such as SYT5, are a family of type III membrane proteins characterized by cytoplasmic repeats related to protein kinase C (see MIM 176960) regulatory (C2) domains, which are thought to bind calcium. Synaptotagmins may act both as negative regulators of vesicle fusion, allowing



fusion in the presence of calcium, and as calcium receptors or sensor molecules (summary by Hudson and Birnbaum, 1995 [PubMed 7597049]).[supplied by OMIM, Feb 2011],

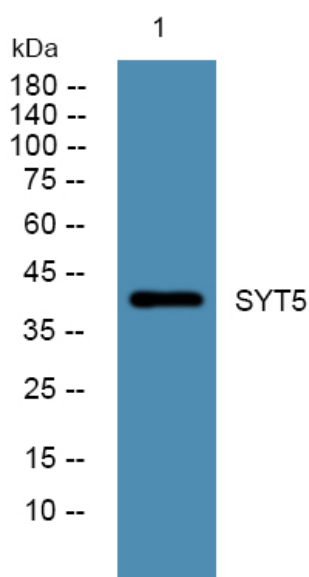
matters needing attention

Avoid repeated freezing and thawing!

Usage suggestions

This product can be used in immunological reaction related experiments. For more information, please consult technical personnel.

Products Images



Western blot analysis of lysates from PC12 cells, primary antibody was diluted at 1:1000, 4° over night