

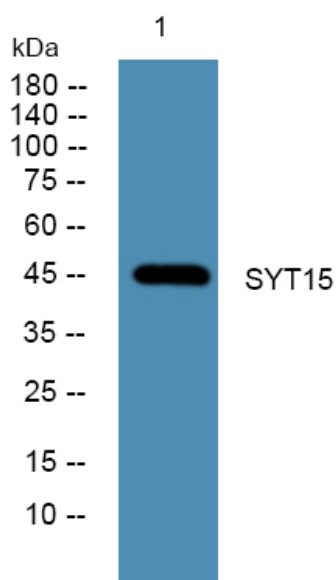


SYT15 Polyclonal Antibody

Catalog No	YP-Ab-06257
Isotype	IgG
Reactivity	Human;Rat;Mouse
Applications	WB;ELISA
Gene Name	SYT15
Protein Name	Synaptotagmin-15 (Chr10Syt) (Synaptotagmin XV) (SytXV)
Immunogen	Synthesized peptide derived from part region of human protein
Specificity	SYT15 Polyclonal Antibody detects endogenous levels of protein.
Formulation	Liquid in PBS containing 50% glycerol, and 0.02% sodium azide.
Source	Polyclonal, Rabbit,IgG
Purification	The antibody was affinity-purified from rabbit antiserum by affinity-chromatography using epitope-specific immunogen.
Dilution	WB 1:500-2000 ELISA 1:5000-20000
Concentration	1 mg/ml
Purity	≥90%
Storage Stability	-20°C/1 year
Synonyms	
Observed Band	46kD
Cell Pathway	[Isoform 1]: Cell membrane ; Single-pass type III membrane protein .; [Isoform 2]: Cell membrane ; Single-pass type III membrane protein .; [Isoform 4]: Cell membrane ; Single-pass type III membrane protein .
Tissue Specificity	Brain,Cerebellum,Donated clones,Heart,Thalamus,
Function	domain:Neither C2 domains mediates Ca(2+)-dependent or -independent phospholipid binding.,function:May be involved in the trafficking and exocytosis of secretory vesicles in non-neuronal tissues.,similarity:Belongs to the synaptotagmin family.,similarity:Contains 2 C2 domains.,subunit:Homodimer.,
Background	synaptotagmin 15(SYT15) Homo sapiens This gene encodes a member of the Synaptotagmin (Syt) family of membrane trafficking proteins. Members of this family contain a transmembrane region and a C-terminal-type tandem C2 domain. Unlike related family members, the encoded protein may be involved in membrane trafficking in non-neuronal tissues. Two transcript variants encoding distinct isoforms have been identified for this gene. [provided by RefSeq, Jul 2008],
matters needing attention	Avoid repeated freezing and thawing!

**Usage suggestions**

This product can be used in immunological reaction related experiments. For more information, please consult technical personnel.

Products Images

Western blot analysis of lysates from SH-SY5Y cells, primary antibody was diluted at 1:1000, 4° over night