

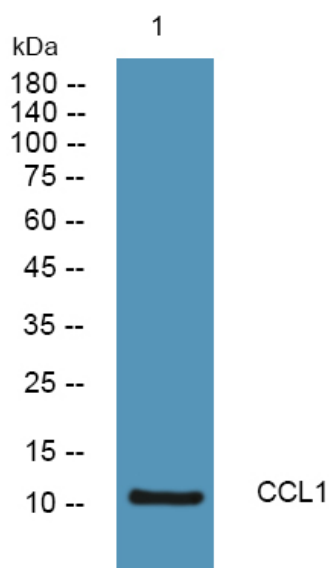


# CCL1 Polyclonal Antibody

<b>Catalog No</b>	YP-Ab-06187
<b>Isotype</b>	IgG
<b>Reactivity</b>	Human;Rat;Mouse;
<b>Applications</b>	WB;ELISA
<b>Gene Name</b>	CCL1 SCYA1
<b>Protein Name</b>	C-C motif chemokine 1 (Small-inducible cytokine A1) (T lymphocyte-secreted protein I-309)
<b>Immunogen</b>	Synthesized peptide derived from human protein . at AA range: 20-100
<b>Specificity</b>	CCL1 Polyclonal Antibody detects endogenous levels of protein.
<b>Formulation</b>	Liquid in PBS containing 50% glycerol, and 0.02% sodium azide.
<b>Source</b>	Polyclonal, Rabbit,IgG
<b>Purification</b>	The antibody was affinity-purified from rabbit antiserum by affinity-chromatography using epitope-specific immunogen.
<b>Dilution</b>	WB 1:500-2000 ELISA 1:5000-20000
<b>Concentration</b>	1 mg/ml
<b>Purity</b>	≥90%
<b>Storage Stability</b>	-20°C/1 year
<b>Synonyms</b>	
<b>Observed Band</b>	10kD
<b>Cell Pathway</b>	Secreted.
<b>Tissue Specificity</b>	Brain,
<b>Function</b>	function:Cytokine that is chemotactic for monocytes but not for neutrophils. Binds to CCR8.,induction:By PMA.,online information:CCL1 entry,similarity:Belongs to the intercrine beta (chemokine CC) family.,subunit:Monomer.,
<b>Background</b>	This antimicrobial gene is one of several chemokine genes clustered on the q-arm of chromosome 17. Chemokines form a superfamily of secreted proteins involved in immunoregulatory and inflammatory processes. The superfamily is divided into four subfamilies based on the arrangement of the N-terminal cysteine residues of the mature peptide. This chemokine, a member of the CC subfamily, is secreted by activated T cells and displays chemotactic activity for monocytes but not for neutrophils. It binds to the chemokine (C-C motif) receptor 8. [provided by RefSeq, Sep 2014],
<b>matters needing attention</b>	Avoid repeated freezing and thawing!

**Usage suggestions**

This product can be used in immunological reaction related experiments. For more information, please consult technical personnel.

**Products Images**

Western blot analysis of lysates from SH-SY5Y cells, primary antibody was diluted at 1:1000, 4° over night.