



SH3G3 Polyclonal Antibody

Catalog No	YP-Ab-06179
Isotype	IgG
Reactivity	Human;Rat;Mouse
Applications	WB;ELISA
Gene Name	SH3GL3 CNSA3 SH3D2C
Protein Name	Endophilin-A3 (EEN-B2) (Endophilin-3) (SH3 domain protein 2C) (SH3 domain-containing GRB2-like protein 3)
Immunogen	Synthesized peptide derived from part region of human protein
Specificity	SH3G3 Polyclonal Antibody detects endogenous levels of protein.
Formulation	Liquid in PBS containing 50% glycerol, and 0.02% sodium azide.
Source	Polyclonal, Rabbit,IgG
Purification	The antibody was affinity-purified from rabbit antiserum by affinity-chromatography using epitope-specific immunogen.
Dilution	WB 1:500-2000 ELISA 1:5000-20000
Concentration	1 mg/ml
Purity	≥90%
Storage Stability	-20°C/1 year
Synonyms	
Observed Band	38kD
Cell Pathway	Cytoplasm . Early endosome membrane ; Peripheral membrane protein . Associated with postsynaptic endosomes in hippocampal neurons. Associated with presynaptic endosomes in olfactory neurons. .
Tissue Specificity	Brain and testis.
Function	domain:An N-terminal amphipathic helix, the BAR domain and a second amphipathic helix inserted into helix 1 of the BAR domain (N-BAR domain) induce membrane curvature and bind curved membranes.,function:Implicated in endocytosis. May recruit other proteins to membranes with high curvature.,similarity:Belongs to the endophilin family.,similarity:Contains 1 BAR domain.,similarity:Contains 1 SH3 domain.,subcellular location:Associated with postsynaptic endosomes in hippocampal neurons. Associated with presynaptic endosomes in olfactory neurons.,subunit:Interacts with ARC (By similarity). Interacts with DNM1, SGIP1 and SYNJ1. Interacts with the huntingtin exon 1 protein (HDEX1P) containing a glutamine repeat in the pathological range and promotes formation of insoluble polyglutamine-containing aggregates in vivo.,tissue specificity:Brain and testis.,
Background	domain:An N-terminal amphipathic helix, the BAR domain and a second amphipathic helix inserted into helix 1 of the BAR domain (N-BAR domain) induce



membrane curvature and bind curved membranes.,function:Implicated in endocytosis. May recruit other proteins to membranes with high curvature.,similarity:Belongs to the endophilin family.,similarity:Contains 1 BAR domain.,similarity:Contains 1 SH3 domain.,subcellular location:Associated with postsynaptic endosomes in hippocampal neurons. Associated with presynaptic endosomes in olfactory neurons.,subunit:Interacts with ARC (By similarity). Interacts with DNM1, SGIP1 and SYNJ1. Interacts with the huntingtin exon 1 protein (HDEX1P) containing a glutamine repeat in the pathological range and promotes formation of insoluble polyglutamine-containing aggregates in vivo.,tissue specificity:Brain and testis.,

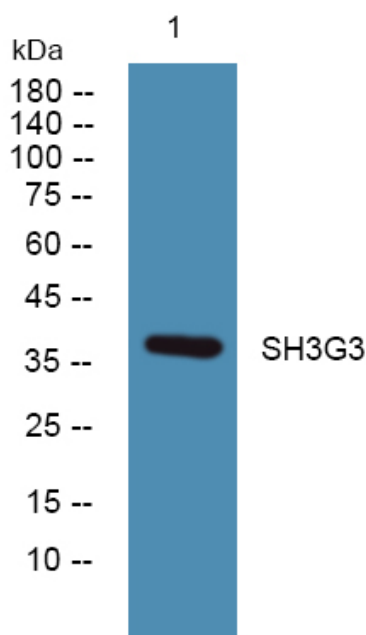
matters needing attention

Avoid repeated freezing and thawing!

Usage suggestions

This product can be used in immunological reaction related experiments. For more information, please consult technical personnel.

Products Images



Western blot analysis of lysates from K562 cells, primary antibody was diluted at 1:1000, 4° over night