

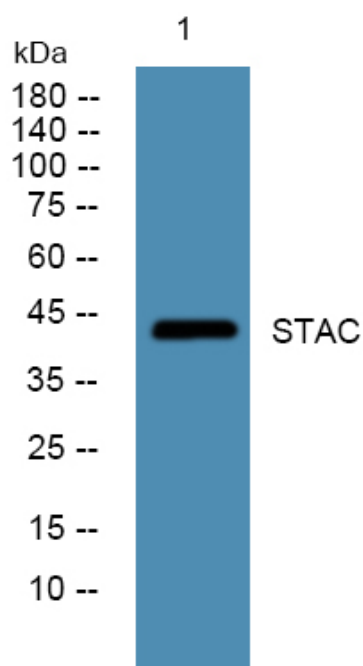


STAC Polyclonal Antibody

Catalog No	YP-Ab-06168
Isotype	IgG
Reactivity	Human;Mouse
Applications	WB;ELISA
Gene Name	STAC
Protein Name	SH3 and cysteine-rich domain-containing protein (Src homology 3 and cysteine-rich domain-containing protein)
Immunogen	Synthesized peptide derived from part region of human protein
Specificity	STAC Polyclonal Antibody detects endogenous levels of protein.
Formulation	Liquid in PBS containing 50% glycerol, and 0.02% sodium azide.
Source	Polyclonal, Rabbit,IgG
Purification	The antibody was affinity-purified from rabbit antiserum by affinity-chromatography using epitope-specific immunogen.
Dilution	WB 1:500-2000 ELISA 1:5000-20000
Concentration	1 mg/ml
Purity	≥90%
Storage Stability	-20°C/1 year
Synonyms	
Observed Band	44kD
Cell Pathway	Cytoplasm, cytosol . Cell membrane ; Peripheral membrane protein ; Cytoplasmic side . Cell membrane, sarcolemma ; Peripheral membrane protein ; Cytoplasmic side .
Tissue Specificity	Brain,Kidney,
Function	function:Probably involved in a neuron-specific signal transduction.,similarity:Contains 1 phorbol-ester/DAG-type zinc finger.,similarity:Contains 1 SH3 domain.,
Background	function:Probably involved in a neuron-specific signal transduction.,similarity:Contains 1 phorbol-ester/DAG-type zinc finger.,similarity:Contains 1 SH3 domain.,
matters needing attention	Avoid repeated freezing and thawing!
Usage suggestions	This product can be used in immunological reaction related experiments. For more information, please consult technical personnel.



Products Images



Western blot analysis of lysates from DU145 cells,
primary antibody was diluted at 1:1000, 4°over night