

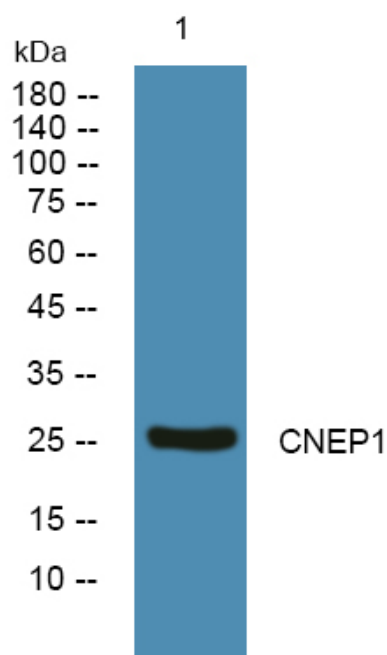


CNEP1 Polyclonal Antibody

Catalog No	YP-Ab-06154
Isotype	IgG
Reactivity	Human;Rat;Mouse
Applications	WB;ELISA
Gene Name	CTDNEP1 DULLARD
Protein Name	CTD nuclear envelope phosphatase 1 (EC 3.1.3.16) (Serine/threonine-protein phosphatase dullard)
Immunogen	Synthesized peptide derived from human protein . at AA range: 100-180
Specificity	CNEP1 Polyclonal Antibody detects endogenous levels of protein.
Formulation	Liquid in PBS containing 50% glycerol, and 0.02% sodium azide.
Source	Polyclonal, Rabbit,IgG
Purification	The antibody was affinity-purified from rabbit antiserum by affinity-chromatography using epitope-specific immunogen.
Dilution	WB 1:500-2000 ELISA 1:5000-20000
Concentration	1 mg/ml
Purity	≥90%
Storage Stability	-20°C/1 year
Synonyms	
Observed Band	26kD
Cell Pathway	Endoplasmic reticulum membrane; Single-pass membrane protein. Nucleus membrane; Single-pass membrane protein.
Tissue Specificity	Muscle specific with lower expression in other metabolic tissues.
Function	catalytic activity:A phosphoprotein + H(2)O = a protein + phosphate.,function:Serine/threonine phosphatase which may be required for proper nuclear membrane morphology. Involved in LPIN1 dephosphorylation. May antagonize BMP signaling.,similarity:Belongs to the dullard family.,similarity:Contains 1 FCP1 homology domain.,
Background	catalytic activity:A phosphoprotein + H(2)O = a protein + phosphate.,function:Serine/threonine phosphatase which may be required for proper nuclear membrane morphology. Involved in LPIN1 dephosphorylation. May antagonize BMP signaling.,similarity:Belongs to the dullard family.,similarity:Contains 1 FCP1 homology domain.,
matters needing attention	Avoid repeated freezing and thawing!

**Usage suggestions**

This product can be used in immunological reaction related experiments. For more information, please consult technical personnel.

Products Images

Western blot analysis of lysates from KB cells, primary antibody was diluted at 1:1000, 4° over night