

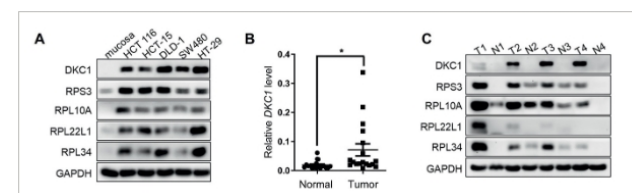


RL22L Polyclonal Antibody

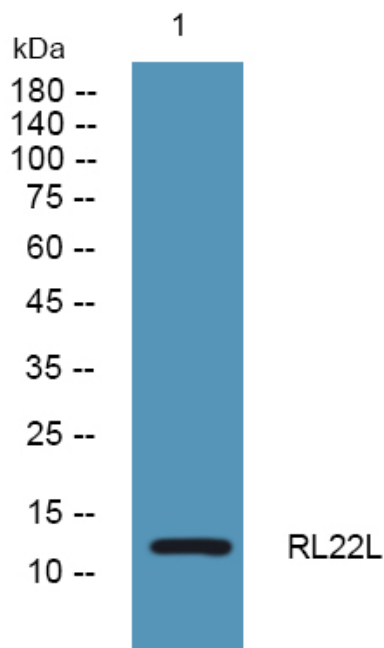
Catalog No	YP-Ab-06106
Isotype	IgG
Reactivity	Human;Mouse
Applications	WB;IP;ELISA;IP
Gene Name	RPL22L1
Protein Name	60S ribosomal protein L22-like 1
Immunogen	Synthesized peptide derived from human protein . at AA range: 30-110
Specificity	RL22L Polyclonal Antibody detects endogenous levels of protein.
Formulation	Liquid in PBS containing 50% glycerol, and 0.02% sodium azide.
Source	Polyclonal, Rabbit,IgG
Purification	The antibody was affinity-purified from rabbit antiserum by affinity-chromatography using epitope-specific immunogen.
Dilution	IP 1:50-200 WB 1:500-2000 ELISA 1:5000-20000
Concentration	1 mg/ml
Purity	≥90%
Storage Stability	-20°C/1 year
Synonyms	
Observed Band	13kD
Cell Pathway	ribosome,cytosolic large ribosomal subunit,
Tissue Specificity	Testis,Uterus,
Function	similarity:Belongs to the ribosomal protein L22e family.,
Background	similarity:Belongs to the ribosomal protein L22e family.,
matters needing attention	Avoid repeated freezing and thawing!
Usage suggestions	This product can be used in immunological reaction related experiments. For more information, please consult technical personnel.



Products Images



Kan, Guangyan, et al. "Dual Inhibition of DKC1 and MEK1/2 Synergistically Restrains the Growth of Colorectal Cancer Cells." *Advanced Science* 8.10 (2021): 2004344.



Western blot analysis of lysates from PC12 cells, primary antibody was diluted at 1:1000, 4° over night