

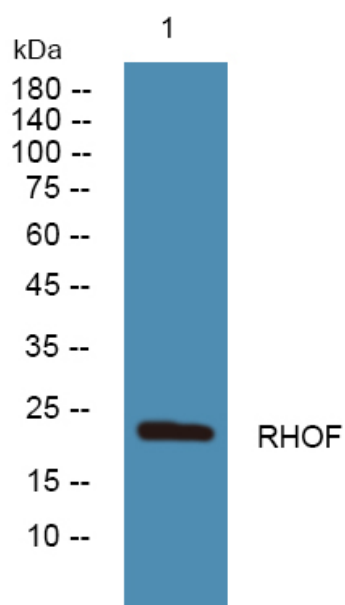


RHOF Polyclonal Antibody

Catalog No	YP-Ab-06099
Isotype	IgG
Reactivity	Human;Mouse
Applications	WB;ELISA
Gene Name	RHOF ARHF RIF
Protein Name	Rho-related GTP-binding protein RhoF (Rho family GTPase Rif) (Rho in filopodia)
Immunogen	Synthesized peptide derived from human protein . at AA range: 90-170
Specificity	RHOF Polyclonal Antibody detects endogenous levels of protein.
Formulation	Liquid in PBS containing 50% glycerol, and 0.02% sodium azide.
Source	Polyclonal, Rabbit,IgG
Purification	The antibody was affinity-purified from rabbit antiserum by affinity-chromatography using epitope-specific immunogen.
Dilution	WB 1:500-2000 ELISA 1:5000-20000
Concentration	1 mg/ml
Purity	≥90%
Storage Stability	-20°C/1 year
Synonyms	
Observed Band	23kD
Cell Pathway	Cell membrane ; Lipid-anchor ; Cytoplasmic side . Cytoplasm, cytoskeleton.
Tissue Specificity	Colon mucosa,Ovary,
Function	function:Plasma membrane-associated small GTPase which cycles between an active GTP-bound and an inactive GDP-bound state. Causes the formation of thin, actin-rich surface projections called filopodia. Functions cooperatively with CDC42 and Rac to generate additional structures, increasing the diversity of actin-based morphology.,similarity:Belongs to the small GTPase superfamily. Rho family.,
Background	function:Plasma membrane-associated small GTPase which cycles between an active GTP-bound and an inactive GDP-bound state. Causes the formation of thin, actin-rich surface projections called filopodia. Functions cooperatively with CDC42 and Rac to generate additional structures, increasing the diversity of actin-based morphology.,similarity:Belongs to the small GTPase superfamily. Rho family.,
matters needing attention	Avoid repeated freezing and thawing!

**Usage suggestions**

This product can be used in immunological reaction related experiments. For more information, please consult technical personnel.

Products Images

Western blot analysis of lysates from SH-SY5Y cells, primary antibody was diluted at 1:1000, 4° over night