

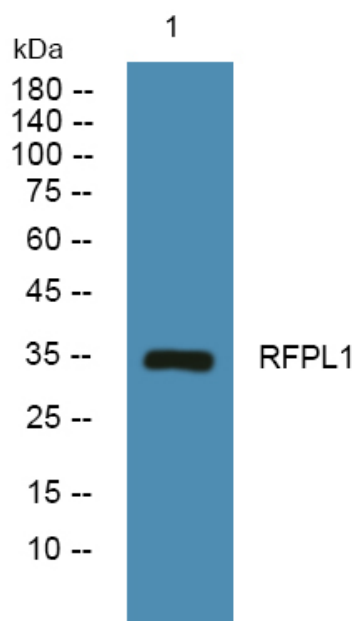


RFPL1 Polyclonal Antibody

Catalog No	YP-Ab-06078
Isotype	IgG
Reactivity	Human;Rat;Mouse;
Applications	WB;ELISA
Gene Name	RFPL1 RFPL1L RNF78
Protein Name	Ret finger protein-like 1 (RING finger protein 78)
Immunogen	Synthesized peptide derived from human protein . at AA range: 160-240
Specificity	RFPL1 Polyclonal Antibody detects endogenous levels of protein.
Formulation	Liquid in PBS containing 50% glycerol, and 0.02% sodium azide.
Source	Polyclonal, Rabbit,IgG
Purification	The antibody was affinity-purified from rabbit antiserum by affinity-chromatography using epitope-specific immunogen.
Dilution	WB 1:500-2000 ELISA 1:5000-20000
Concentration	1 mg/ml
Purity	≥90%
Storage Stability	-20°C/1 year
Synonyms	
Observed Band	34kD
Cell Pathway	Cytoplasm . Nucleus . A higher concentration is observed in the cytoplasm compared to the nucleus. .
Tissue Specificity	Seems to be expressed in prostate and less abundantly in adult brain, fetal liver, and fetal kidney.
Function	similarity:Contains 1 B30.2/SPRY domain.,similarity:Contains 1 RING-type zinc finger.,tissue specificity:Seems to be expressed in prostate and less abundantly in adult brain, fetal liver, and fetal kidney.,
Background	similarity:Contains 1 B30.2/SPRY domain.,similarity:Contains 1 RING-type zinc finger.,tissue specificity:Seems to be expressed in prostate and less abundantly in adult brain, fetal liver, and fetal kidney.,
matters needing attention	Avoid repeated freezing and thawing!
Usage suggestions	This product can be used in immunological reaction related experiments. For more information, please consult technical personnel.



Products Images



Western blot analysis of lysates from DU145 cells,
primary antibody was diluted at 1:1000, 4° over night