

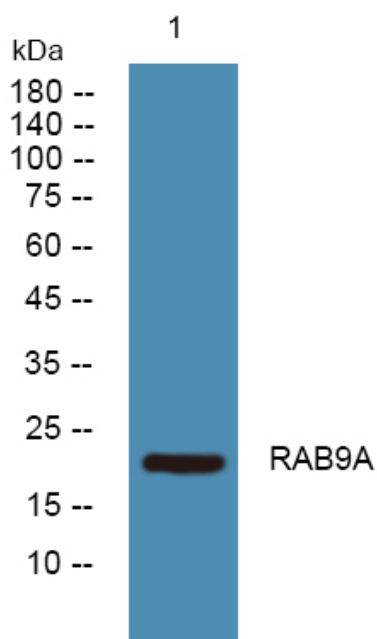


RAB9A Polyclonal Antibody

Catalog No	YP-Ab-06060
Isotype	IgG
Reactivity	Human;Rat;Mouse
Applications	WB;ELISA
Gene Name	RAB9A RAB9
Protein Name	Ras-related protein Rab-9A
Immunogen	Synthesized peptide derived from human protein . at AA range: 80-160
Specificity	RAB9A Polyclonal Antibody detects endogenous levels of protein.
Formulation	Liquid in PBS containing 50% glycerol, and 0.02% sodium azide.
Source	Polyclonal, Rabbit,IgG
Purification	The antibody was affinity-purified from rabbit antiserum by affinity-chromatography using epitope-specific immunogen.
Dilution	WB 1:500-2000 ELISA 1:5000-20000
Concentration	1 mg/ml
Purity	≥90%
Storage Stability	-20°C/1 year
Synonyms	
Observed Band	22kD
Cell Pathway	Cell membrane ; Lipid-anchor ; Cytoplasmic side . Endoplasmic reticulum membrane . Golgi apparatus membrane . Late endosome . Cytoplasmic vesicle, phagosome membrane ; Lipid-anchor ; Cytoplasmic side . Cytoplasmic vesicle, phagosome . Cytoplasmic vesicle membrane . Melanosome . Colocalizes with OSBPL1A at the late endosome (PubMed:16176980). Recruited to phagosomes containing S.aureus or M.tuberculosis (PubMed:21255211). .
Tissue Specificity	Brain,Epithelium,Muscle,
Function	function:Involved in the transport of proteins between the endosomes and the trans Golgi network.,similarity:Belongs to the small GTPase superfamily. Rab family.,
Background	function:Involved in the transport of proteins between the endosomes and the trans Golgi network.,similarity:Belongs to the small GTPase superfamily. Rab family.,
matters needing attention	Avoid repeated freezing and thawing!

Usage suggestions

This product can be used in immunological reaction related experiments. For more information, please consult technical personnel.

Products Images

Western blot analysis of lysates from U2OS cells, primary antibody was diluted at 1:1000, 4° over night