

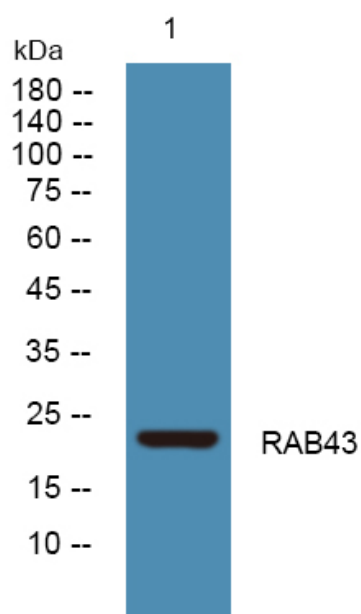


# RAB43 Polyclonal Antibody

Catalog No	YP-Ab-06055
Isotype	IgG
Reactivity	Human;Rat;Mouse;
Applications	WB;ELISA
Gene Name	RAB43 RAB41
Protein Name	Ras-related protein Rab-43 (Ras-related protein Rab-41)
Immunogen	Synthesized peptide derived from human protein . at AA range: 90-170
Specificity	RAB43 Polyclonal Antibody detects endogenous levels of protein.
Formulation	Liquid in PBS containing 50% glycerol, and 0.02% sodium azide.
Source	Polyclonal, Rabbit,IgG
Purification	The antibody was affinity-purified from rabbit antiserum by affinity-chromatography using epitope-specific immunogen.
Dilution	WB 1:500-2000 ELISA 1:5000-20000
Concentration	1 mg/ml
Purity	≥90%
Storage Stability	-20°C/1 year
Synonyms	
Observed Band	23kD
Cell Pathway	Cytoplasmic vesicle, phagosome . Cytoplasmic vesicle, phagosome membrane ; Lipid-anchor ; Cytoplasmic side . Golgi apparatus . Golgi apparatus, trans-Golgi network membrane ; Lipid-anchor . Golgi apparatus, trans-Golgi network . Recruited to phagosomes containing S.aureus or M.tuberculosis (PubMed:21255211). .
Tissue Specificity	Widely expressed in brain, testis, lung, heart, ovary, colon, kidney, uterus and spleen but not in liver.
Function	similarity:Belongs to the small GTPase superfamily. Rab family.,tissue specificity:Widely expressed in brain, testis, lung, heart, ovary, colon, kidney, uterus and spleen but not in liver.,
Background	similarity:Belongs to the small GTPase superfamily. Rab family.,tissue specificity:Widely expressed in brain, testis, lung, heart, ovary, colon, kidney, uterus and spleen but not in liver.,
matters needing attention	Avoid repeated freezing and thawing!

**Usage suggestions**

This product can be used in immunological reaction related experiments. For more information, please consult technical personnel.

**Products Images**

Western blot analysis of lysates from K562 cells,  
primary antibody was diluted at 1:1000, 4° over night