

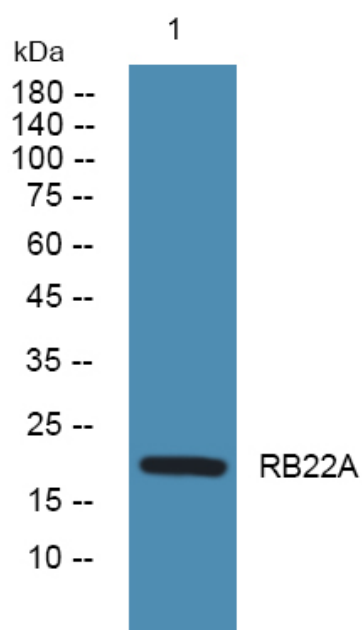


RB22A Polyclonal Antibody

Catalog No	YP-Ab-06042
Isotype	IgG
Reactivity	Human;Mouse
Applications	WB;ELISA
Gene Name	RAB22A RAB22
Protein Name	Ras-related protein Rab-22A (Rab-22)
Immunogen	Synthesized peptide derived from human protein . at AA range: 80-160
Specificity	RB22A Polyclonal Antibody detects endogenous levels of protein.
Formulation	Liquid in PBS containing 50% glycerol, and 0.02% sodium azide.
Source	Polyclonal, Rabbit,IgG
Purification	The antibody was affinity-purified from rabbit antiserum by affinity-chromatography using epitope-specific immunogen.
Dilution	WB 1:500-2000 ELISA 1:5000-20000
Concentration	1 mg/ml
Purity	≥90%
Storage Stability	-20°C/1 year
Synonyms	
Observed Band	21kD
Cell Pathway	Endosome membrane ; Lipid-anchor . Cell membrane ; Lipid-anchor . Early endosome . Late endosome . Cell projection, ruffle . Cytoplasmic vesicle . Cytoplasmic vesicle, phagosome . Cytoplasmic vesicle, phagosome membrane ; Lipid-anchor ; Cytoplasmic side . Recruited to phagosomes containing S.aureus or M.tuberculosis. .
Tissue Specificity	Bladder,Colon,Colon carcinoma,Uterus,
Function	similarity:Belongs to the small GTPase superfamily. Rab family.,subunit:Interacts directly with ZFYVE20 (By similarity). Binds EEA1.,
Background	The protein encoded by this gene is a member of the RAB family of small GTPases. The GTP-bound form of the encoded protein has been shown to interact with early-endosomal antigen 1, and may be involved in the trafficking of and interaction between endosomal compartments. [provided by RefSeq, Jul 2008],
matters needing attention	Avoid repeated freezing and thawing!

**Usage suggestions**

This product can be used in immunological reaction related experiments. For more information, please consult technical personnel.

Products Images

Western blot analysis of lysates from HCT116 cells, primary antibody was diluted at 1:1000, 4° over night.