

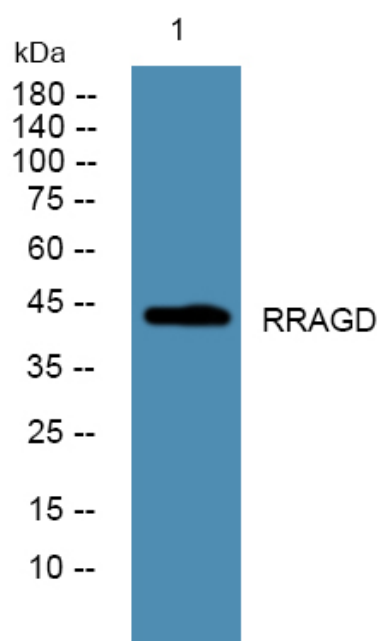


# RRAGD Polyclonal Antibody

<b>Catalog No</b>	YP-Ab-06035
<b>Isotype</b>	IgG
<b>Reactivity</b>	Human;Mouse
<b>Applications</b>	WB;ELISA;CoIP
<b>Gene Name</b>	RRAGD
<b>Protein Name</b>	Ras-related GTP-binding protein D (Rag D) (RagD)
<b>Immunogen</b>	Synthesized peptide derived from human protein . at AA range: 140-220
<b>Specificity</b>	RRAGD Polyclonal Antibody detects endogenous levels of protein.
<b>Formulation</b>	Liquid in PBS containing 50% glycerol, and 0.02% sodium azide.
<b>Source</b>	Polyclonal, Rabbit,IgG
<b>Purification</b>	The antibody was affinity-purified from rabbit antiserum by affinity-chromatography using epitope-specific immunogen.
<b>Dilution</b>	IP 1:50-200 WB 1:500-2000 ELISA 1:5000-20000
<b>Concentration</b>	1 mg/ml
<b>Purity</b>	≥90%
<b>Storage Stability</b>	-20°C/1 year
<b>Synonyms</b>	
<b>Observed Band</b>	44kD
<b>Cell Pathway</b>	Cytoplasm . Nucleus . Lysosome . Predominantly cytoplasmic. May shuttle between the cytoplasm and nucleus, depending on the bound nucleotide state of associated RRAGA (PubMed:11073942). .
<b>Tissue Specificity</b>	Amygdala,Lung,
<b>Function</b>	function:Has guanine nucleotide-binding activity but lacks intrinsic GTPase activity.,similarity:Belongs to the GTR/RAG GTP-binding protein family.,subcellular location:Predominantly cytoplasmic. May shuttle between the cytoplasm and nucleus, depending on the bound nucleotide state of associated RRAGA.,subunit:Forms a heterodimer with RRAGA in a sequence-independent manner. Binds GTP. Interacts with NOL8 and RRAGB.,
<b>Background</b>	RRAGD is a monomeric guanine nucleotide-binding protein, or G protein. By binding GTP or GDP, small G proteins act as molecular switches in numerous cell processes and signaling pathways.[supplied by OMIM, Apr 2004],
<b>matters needing attention</b>	Avoid repeated freezing and thawing!

**Usage suggestions**

This product can be used in immunological reaction related experiments. For more information, please consult technical personnel.

**Products Images**

Western blot analysis of lysates from KB cells, primary antibody was diluted at 1:1000, 4° over night