



# RAIN Polyclonal Antibody

<b>Catalog No</b>	YP-Ab-06032
<b>Isotype</b>	IgG
<b>Reactivity</b>	Human;Rat;Mouse;
<b>Applications</b>	WB;ELISA
<b>Gene Name</b>	RASIP1
<b>Protein Name</b>	Ras-interacting protein 1 (Rain)
<b>Immunogen</b>	Synthesized peptide derived from human protein . at AA range: 620-700
<b>Specificity</b>	RAIN Polyclonal Antibody detects endogenous levels of protein.
<b>Formulation</b>	Liquid in PBS containing 50% glycerol, and 0.02% sodium azide.
<b>Source</b>	Polyclonal, Rabbit,IgG
<b>Purification</b>	The antibody was affinity-purified from rabbit antiserum by affinity-chromatography using epitope-specific immunogen.
<b>Dilution</b>	WB 1:500-2000 ELISA 1:5000-20000
<b>Concentration</b>	1 mg/ml
<b>Purity</b>	≥90%
<b>Storage Stability</b>	-20°C/1 year
<b>Synonyms</b>	
<b>Observed Band</b>	105kD
<b>Cell Pathway</b>	Cytoplasm, perinuclear region . Golgi apparatus, Golgi stack . Associated with perinuclear vesicles. Is recruited to Golgi stacks by activated HRAS.
<b>Tissue Specificity</b>	Highly expressed in heart. Detected at lower levels in placenta and pancreas.
<b>Function</b>	function:May act as effector for Golgi-bound HRAS and other Ras-like proteins. May promote HRAS-mediated transformation.,similarity:Contains 1 dilute domain.,similarity:Contains 1 Ras-associating domain.,subcellular location:Associated with perinuclear vesicles. Is recruited to Golgi stacks by activated HRAS.,subunit:Interacts with Ras family members that have been activated by GTP binding. Interacts with HRAS, RAP1A, RAP2, RRAS, RAF1 and RRAS2.,tissue specificity:Highly expressed in heart. Detected at lower levels in placenta and pancreas.,
<b>Background</b>	function:May act as effector for Golgi-bound HRAS and other Ras-like proteins. May promote HRAS-mediated transformation.,similarity:Contains 1 dilute domain.,similarity:Contains 1 Ras-associating domain.,subcellular location:Associated with perinuclear vesicles. Is recruited to Golgi stacks by activated HRAS.,subunit:Interacts with Ras family members that have been activated by GTP binding. Interacts with HRAS, RAP1A, RAP2, RRAS, RAF1 and RRAS2.,tissue specificity:Highly expressed in heart. Detected at lower levels in



placenta and pancreas.,

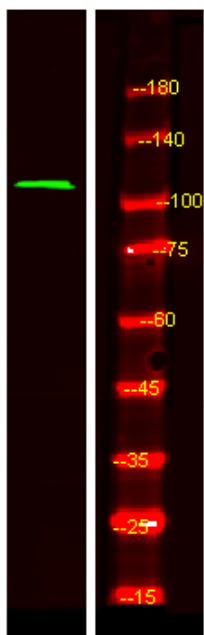
**matters needing attention**

Avoid repeated freezing and thawing!

**Usage suggestions**

This product can be used in immunological reaction related experiments. For more information, please consult technical personnel.

## Products Images



Western Blot analysis of Hela lysis, using primary antibody at 1:1000 dilution. Secondary antibody(catalog#:RS23920) was diluted at 1:10000