

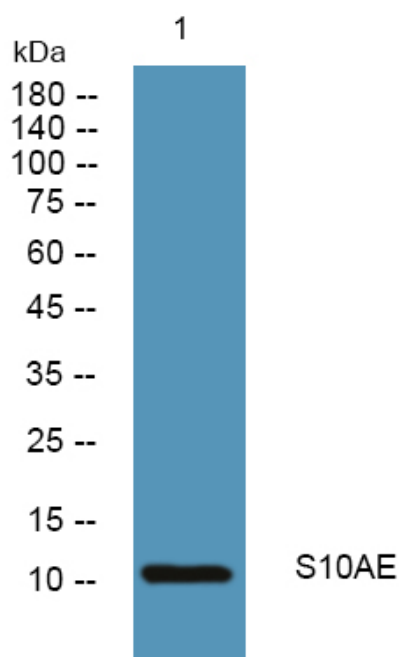


# S10AE Polyclonal Antibody

<b>Catalog No</b>	YP-Ab-05989
<b>Isotype</b>	IgG
<b>Reactivity</b>	Human;Mouse
<b>Applications</b>	WB;ELISA
<b>Gene Name</b>	S100A14 S100A15
<b>Protein Name</b>	Protein S100-A14 (S100 calcium-binding protein A14) (S114)
<b>Immunogen</b>	Synthesized peptide derived from human protein . at AA range: 30-110
<b>Specificity</b>	S10AE Polyclonal Antibody detects endogenous levels of protein.
<b>Formulation</b>	Liquid in PBS containing 50% glycerol, and 0.02% sodium azide.
<b>Source</b>	Polyclonal, Rabbit,IgG
<b>Purification</b>	The antibody was affinity-purified from rabbit antiserum by affinity-chromatography using epitope-specific immunogen.
<b>Dilution</b>	WB 1:500-2000 ELISA 1:5000-20000
<b>Concentration</b>	1 mg/ml
<b>Purity</b>	≥90%
<b>Storage Stability</b>	-20°C/1 year
<b>Synonyms</b>	
<b>Observed Band</b>	11kD
<b>Cell Pathway</b>	Cytoplasm .
<b>Tissue Specificity</b>	Expressed at highest levels in colon and at moderate levels in thymus, kidney, liver, small intestine, and lung. Low expression in heart and no expression is seen in brain, skeletal muscle, spleen, placenta and peripheral blood leukocytes.
<b>Function</b>	similarity:Belongs to the S-100 family.,similarity:Contains 2 EF-hand domains.,tissue specificity:Expressed at highest levels in colon and at moderate levels in thymus, kidney, liver, small intestine, and lung. Low expression in heart and no expression is seen in brain, skeletal muscle, spleen, placenta and peripheral blood leukocytes.,
<b>Background</b>	This gene encodes a member of the S100 protein family which contains an EF-hand motif and binds calcium. The gene is located in a cluster of S100 genes on chromosome 1. Levels of the encoded protein have been found to be lower in cancerous tissue and associated with metastasis suggesting a tumor suppressor function (PMID: 19956863, 19351828). [provided by RefSeq, Dec 2011],
<b>matters needing attention</b>	Avoid repeated freezing and thawing!

**Usage suggestions**

This product can be used in immunological reaction related experiments. For more information, please consult technical personnel.

**Products Images**

Western blot analysis of lysates from DU145 cells, primary antibody was diluted at 1:1000, 4° over night.