



PA21B Polyclonal Antibody

Catalog No	YP-Ab-05928
Isotype	IgG
Reactivity	Human;Rat;Mouse;
Applications	WB;ELISA
Gene Name	PLA2G1B PLA2 PLA2A PPLA2
Protein Name	Phospholipase A2 (EC 3.1.1.4) (Group IB phospholipase A2) (Phosphatidylcholine 2-acylhydrolase 1B)
Immunogen	Synthesized peptide derived from human protein . at AA range: 70-150
Specificity	PA21B Polyclonal Antibody detects endogenous levels of protein.
Formulation	Liquid in PBS containing 50% glycerol, and 0.02% sodium azide.
Source	Polyclonal, Rabbit,IgG
Purification	The antibody was affinity-purified from rabbit antiserum by affinity-chromatography using epitope-specific immunogen.
Dilution	WB 1:500-2000 ELISA 1:5000-20000
Concentration	1 mg/ml
Purity	≥90%
Storage Stability	-20°C/1 year
Synonyms	
Observed Band	16kD
Cell Pathway	Secreted . Secreted from pancreatic acinar cells in its inactive form.
Tissue Specificity	Selectively expressed in pancreas, lung, liver and kidney. Also detected at lower levels in ovary and testis.
Function	catalytic activity:Phosphatidylcholine + H(2)O = 1-acylglycerophosphocholine + a carboxylate.,cofactor:Binds 1 calcium ion per subunit.,function:PA2 catalyzes the calcium-dependent hydrolysis of the 2-acyl groups in 3-sn-phosphoglycerides.,similarity:Belongs to the phospholipase A2 family.,
Background	This gene encodes a secreted member of the phospholipase A2 (PLA2) class of enzymes, which is produced by the pancreatic acinar cells. The encoded calcium-dependent enzyme catalyzes the hydrolysis of the sn-2 position of membrane glycerophospholipids to release arachidonic acid (AA) and lysophospholipids. AA is subsequently converted by downstream metabolic enzymes to several bioactive lipophilic compounds (eicosanoids), including prostaglandins (PGs) and leukotrienes (LTs). The enzyme may be involved in several physiological processes including cell contraction, cell proliferation and pathological response. [provided by RefSeq, Aug 2013],

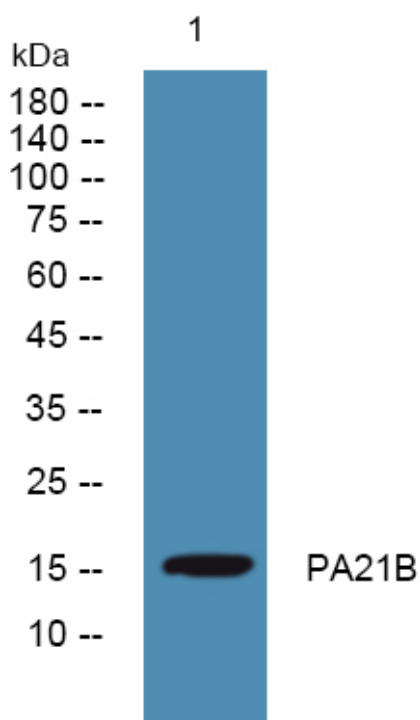
**matters needing attention**

Avoid repeated freezing and thawing!

Usage suggestions

This product can be used in immunological reaction related experiments. For more information, please consult technical personnel.

Products Images



Western blot analysis of lysates from A431 cells, primary antibody was diluted at 1:1000, 4° over night