



PGK2 Polyclonal Antibody

Catalog No	YP-Ab-05926
Isotype	IgG
Reactivity	Human;Mouse
Applications	WB;ELISA
Gene Name	PGK2 PGKB
Protein Name	Phosphoglycerate kinase 2 (EC 2.7.2.3) (Phosphoglycerate kinase, testis specific)
Immunogen	Synthesized peptide derived from human protein . at AA range: 80-160
Specificity	PGK2 Polyclonal Antibody detects endogenous levels of protein.
Formulation	Liquid in PBS containing 50% glycerol, and 0.02% sodium azide.
Source	Polyclonal, Rabbit,IgG
Purification	The antibody was affinity-purified from rabbit antiserum by affinity-chromatography using epitope-specific immunogen.
Dilution	WB 1:500-2000 ELISA 1:5000-20000
Concentration	1 mg/ml
Purity	≥90%
Storage Stability	-20°C/1 year
Synonyms	
Observed Band	45kD
Cell Pathway	Cytoplasm .
Tissue Specificity	Mainly found in round spermatids. Localized on the principle piece in the sperm (at protein level). Testis-specific. Expression significantly decreased in the testis of elderly men.
Function	catalytic activity:ATP + 3-phospho-D-glycerate = ADP + 3-phospho-D-glyceroyl phosphate.,online information:Phosphoglycerate kinase entry,pathway:Carbohydrate degradation; glycolysis; pyruvate from D-glyceraldehyde 3-phosphate: step 2/5.,similarity:Belongs to the phosphoglycerate kinase family.,subunit:Monomer.,tissue specificity:Testis specific.,
Background	phosphoglycerate kinase 2(PGK2) Homo sapiens This gene is intronless, arose via retrotransposition of the phosphoglycerate kinase 1 gene, and is expressed specifically in the testis. Initially assumed to be a pseudogene, the encoded protein is actually a functional phosphoglycerate kinase that catalyzes the reversible conversion of 1,3-bisphosphoglycerate to 3-phosphoglycerate, during the Embden-Meyerhof-Parnas pathway of glycolysis, in the later stages of spermatogenesis.[provided by RefSeq, May 2010],

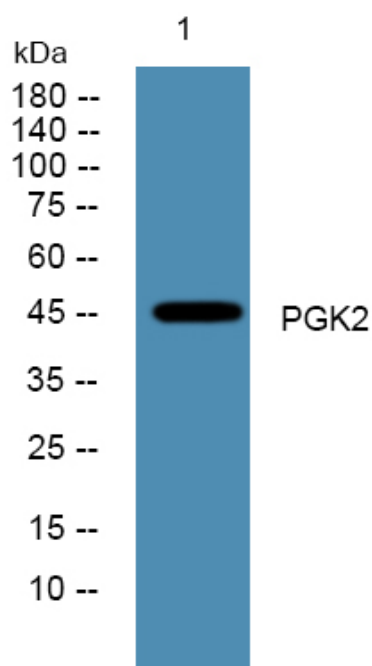
**matters needing attention**

Avoid repeated freezing and thawing!

Usage suggestions

This product can be used in immunological reaction related experiments. For more information, please consult technical personnel.

Products Images



Western blot analysis of lysates from U2OS cells, primary antibody was diluted at 1:1000, 4° over night