



PIGQ Polyclonal Antibody

Catalog No	YP-Ab-05919
Isotype	IgG
Reactivity	Human;Mouse
Applications	WB;ELISA
Gene Name	PIGQ GPI1
Protein Name	Phosphatidylinositol N-acetylglucosaminyltransferase subunit Q (EC 2.4.1.198) (N-acetylglucosamyl transferase component GPI1) (Phosphatidylinositol-glycan biosynthesis class Q protein) (PIG-Q)
Immunogen	Synthesized peptide derived from human protein . at AA range: 130-210
Specificity	PIGQ Polyclonal Antibody detects endogenous levels of protein.
Formulation	Liquid in PBS containing 50% glycerol, and 0.02% sodium azide.
Source	Polyclonal, Rabbit,IgG
Purification	The antibody was affinity-purified from rabbit antiserum by affinity-chromatography using epitope-specific immunogen.
Dilution	WB 1:500-2000 ELISA 1:5000-20000
Concentration	1 mg/ml
Purity	≥90%
Storage Stability	-20°C/1 year
Synonyms	
Observed Band	83kD
Cell Pathway	Membrane ; Multi-pass membrane protein .
Tissue Specificity	Melanoma,Retinoblastoma,
Function	catalytic activity:UDP-N-acetyl-D-glucosamine + 1-phosphatidyl-1D-myo-inositol = UDP + 6-(N-acetyl-alpha-D-glucosaminyl)-1-phosphatidyl-1D-myo-inositol.,function:Part of the complex catalyzing the transfer of N-acetylglucosamine from UDP-N-acetylglucosamine to phosphatidylinositol, the first step of GPI biosynthesis.,pathway:Glycolipid biosynthesis; glycosylphosphatidylinositol-anchor biosynthesis.,similarity:Belongs to the PIGQ family.,subunit:Associates with PIGA, PIGC, PIGH, PIGP and DPM2. The latter is not essential for activity.,
Background	This gene is involved in the first step in glycosylphosphatidylinositol (GPI)-anchor biosynthesis. The GPI-anchor is a glycolipid found on many blood cells and serves to anchor proteins to the cell surface. This gene encodes a N-acetylglucosaminyl transferase component that is part of the complex that catalyzes transfer of N-acetylglucosamine (GlcNAc) from UDP-GlcNAc to



phosphatidylinositol (PI). Alternatively spliced transcript variants encoding different isoforms have been found for this gene. [provided by RefSeq, Jun 2012],

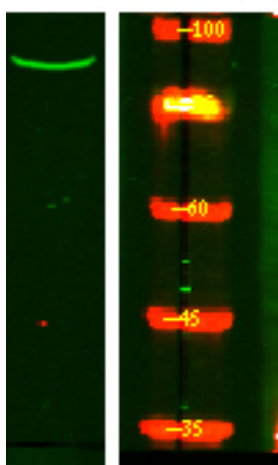
matters needing attention

Avoid repeated freezing and thawing!

Usage suggestions

This product can be used in immunological reaction related experiments. For more information, please consult technical personnel.

Products Images



Western Blot analysis of Hela lysis, using primary antibody at 1:1000 dilution. Secondary antibody(catalog#:RS23920) was diluted at 1:10000