

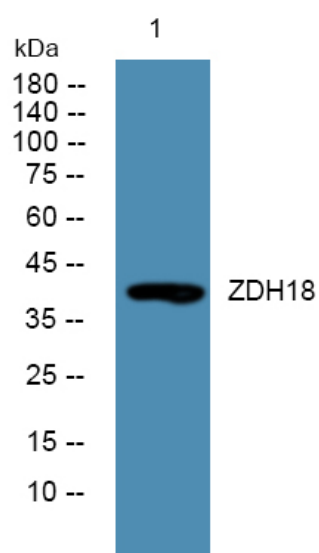


# ZDH18 Polyclonal Antibody

<b>Catalog No</b>	YP-Ab-05899
<b>Isotype</b>	IgG
<b>Reactivity</b>	Human;Mouse;Rat
<b>Applications</b>	WB;ELISA
<b>Gene Name</b>	ZDHHC18
<b>Protein Name</b>	Palmitoyltransferase ZDHHC18 (EC 2.3.1.-) (Zinc finger DHHC domain-containing protein 18) (DHHC-18)
<b>Immunogen</b>	Synthesized peptide derived from human protein . at AA range: 20-100
<b>Specificity</b>	ZDH18 Polyclonal Antibody detects endogenous levels of protein.
<b>Formulation</b>	Liquid in PBS containing 50% glycerol, and 0.02% sodium azide.
<b>Source</b>	Polyclonal, Rabbit,IgG
<b>Purification</b>	The antibody was affinity-purified from rabbit antiserum by affinity-chromatography using epitope-specific immunogen.
<b>Dilution</b>	WB 1:500-2000 ELISA 1:5000-20000
<b>Concentration</b>	1 mg/ml
<b>Purity</b>	≥90%
<b>Storage Stability</b>	-20°C/1 year
<b>Synonyms</b>	
<b>Observed Band</b>	42kD
<b>Cell Pathway</b>	Golgi apparatus membrane ; Multi-pass membrane protein .
<b>Tissue Specificity</b>	Widely expressed.
<b>Function</b>	catalytic activity:Palmitoyl-CoA + protein-cysteine = S-palmitoyl protein + CoA.,domain:The DHHC domain is required for palmitoyltransferase activity.,function:Has palmitoyltransferase activity towards HRAS and LCK.,similarity:Belongs to the DHHC palmitoyltransferase family. ERF2/ZDHHC9 subfamily.,similarity:Contains 1 DHHC-type zinc finger.,
<b>Background</b>	catalytic activity:Palmitoyl-CoA + protein-cysteine = S-palmitoyl protein + CoA.,domain:The DHHC domain is required for palmitoyltransferase activity.,function:Has palmitoyltransferase activity towards HRAS and LCK.,similarity:Belongs to the DHHC palmitoyltransferase family. ERF2/ZDHHC9 subfamily.,similarity:Contains 1 DHHC-type zinc finger.,
<b>matters needing attention</b>	Avoid repeated freezing and thawing!

**Usage suggestions**

This product can be used in immunological reaction related experiments. For more information, please consult technical personnel.

**Products Images**

Western blot analysis of lysates from Jarkat cells, primary antibody was diluted at 1:1000, 4° over night