

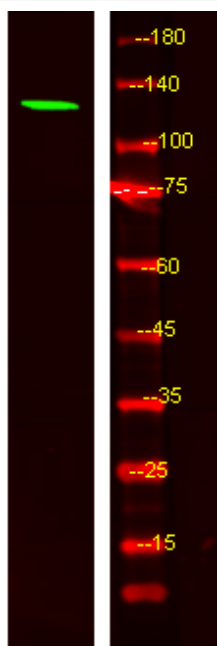


MYO1F Polyclonal Antibody

Catalog No	YP-Ab-05778
Isotype	IgG
Reactivity	Human;Mouse
Applications	WB;ELISA
Gene Name	MYO1F
Protein Name	Unconventional myosin-I _f (Myosin-I _e)
Immunogen	Synthesized peptide derived from human protein . at AA range: 640-720
Specificity	MYO1F Polyclonal Antibody detects endogenous levels of protein.
Formulation	Liquid in PBS containing 50% glycerol, and 0.02% sodium azide.
Source	Polyclonal, Rabbit,IgG
Purification	The antibody was affinity-purified from rabbit antiserum by affinity-chromatography using epitope-specific immunogen.
Dilution	WB 1:500-2000 ELISA 1:5000-20000
Concentration	1 mg/ml
Purity	≥90%
Storage Stability	-20°C/1 year
Synonyms	
Observed Band	120kD
Cell Pathway	myosin complex,unconventional myosin complex,
Tissue Specificity	Blood,Brain,Epithelium,Retina,Spleen,
Function	function:Myosins are actin-based motor molecules with ATPase activity. Unconventional myosins serve in intracellular movements. Their highly divergent tails are presumed to bind to membranous compartments, which would be moved relative to actin filaments.,similarity:Contains 1 IQ domain.,similarity:Contains 1 myosin head-like domain.,similarity:Contains 1 SH3 domain.,
Background	function:Myosins are actin-based motor molecules with ATPase activity. Unconventional myosins serve in intracellular movements. Their highly divergent tails are presumed to bind to membranous compartments, which would be moved relative to actin filaments.,similarity:Contains 1 IQ domain.,similarity:Contains 1 myosin head-like domain.,similarity:Contains 1 SH3 domain.,
matters needing attention	Avoid repeated freezing and thawing!

**Usage suggestions**

This product can be used in immunological reaction related experiments. For more information, please consult technical personnel.

Products Images

Western Blot analysis of HEK293 lysis, using primary antibody at 1:1000 dilution. Secondary antibody(catalog#:RS23920) was diluted at 1:10000