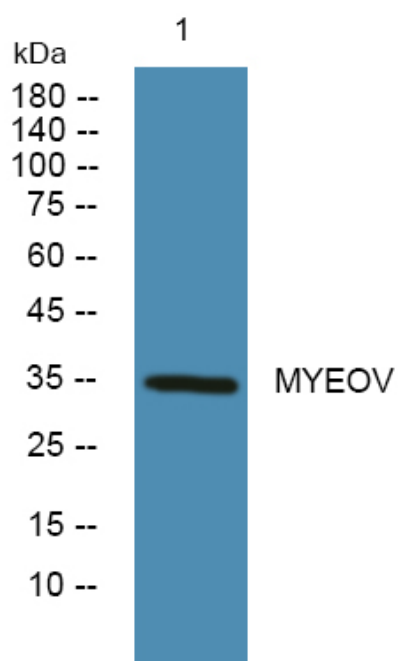




MYEOV Polyclonal Antibody

Catalog No	YP-Ab-05768
Isotype	IgG
Reactivity	Human;Rat;Mouse;
Applications	WB;ELISA
Gene Name	MYEOV OCIM
Protein Name	Myeloma-overexpressed gene protein (Oncogene in multiple myeloma)
Immunogen	Synthesized peptide derived from human protein . at AA range: 80-160
Specificity	MYEOV Polyclonal Antibody detects endogenous levels of protein.
Formulation	Liquid in PBS containing 50% glycerol, and 0.02% sodium azide.
Source	Polyclonal, Rabbit,IgG
Purification	The antibody was affinity-purified from rabbit antiserum by affinity-chromatography using epitope-specific immunogen.
Dilution	WB 1:500-2000 ELISA 1:5000-20000
Concentration	1 mg/ml
Purity	≥90%
Storage Stability	-20°C/1 year
Synonyms	
Observed Band	34kD
Cell Pathway	
Tissue Specificity	Brain,Stomach cancer,
Function	developmental stage:Overexpressed in tumor cells lines with a t(11;14)(q13;q32) translocation.,
Background	developmental stage:Overexpressed in tumor cells lines with a t(11;14)(q13;q32) translocation.,
matters needing attention	Avoid repeated freezing and thawing!
Usage suggestions	This product can be used in immunological reaction related experiments. For more information, please consult technical personnel.

Products Images



Western blot analysis of lysates from SW480 cells,
primary antibody was diluted at 1:1000, 4° over night