

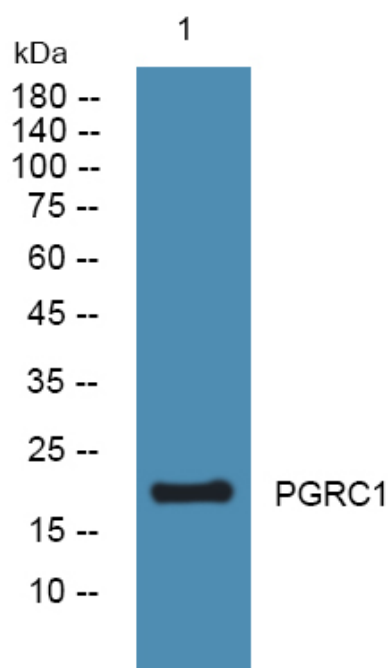


# PGRC1 Polyclonal Antibody

|                                  |  |
|----------------------------------|--|
| <b>Catalog No</b>                | YP-Ab-05726  |
| <b>Isotype</b>                   | IgG  |
| <b>Reactivity</b>                | Human;Rat;Mouse  |
| <b>Applications</b>              | WB;ELISA   |
| <b>Gene Name</b>                 | PGRMC1 HPR6.6 PGRMC  |
| <b>Protein Name</b>              | Membrane-associated progesterone receptor component 1 (mPR)  |
| <b>Immunogen</b>                 | Synthesized peptide derived from human protein . at AA range: 20-100   |
| <b>Specificity</b>               | PGRC1 Polyclonal Antibody detects endogenous levels of protein.  |
| <b>Formulation</b>               | Liquid in PBS containing 50% glycerol, and 0.02% sodium azide.   |
| <b>Source</b>                    | Polyclonal, Rabbit,IgG   |
| <b>Purification</b>              | The antibody was affinity-purified from rabbit antiserum by affinity-chromatography using epitope-specific immunogen.  |
| <b>Dilution</b>                  | WB 1:500-2000 ELISA 1:5000-20000   |
| <b>Concentration</b>             | 1 mg/ml  |
| <b>Purity</b>                    | ≥90%   |
| <b>Storage Stability</b>         | -20°C/1 year   |
| <b>Synonyms</b>                  |  |
| <b>Observed Band</b>             | 21kD   |
| <b>Cell Pathway</b>              | Microsome membrane ; Single-pass membrane protein . Smooth endoplasmic reticulum membrane ; Single-pass membrane protein . Mitochondrion outer membrane ; Single-pass membrane protein ; Extracellular side .  |
| <b>Tissue Specificity</b>        | Widely expressed, with highest expression in liver and kidney. Expressed by endometrial glands and stroma (at protein level) (PubMed:23793472).  |
| <b>Function</b>                  | domain:The cytochrome b5 heme-binding domain lacks the conserved iron-binding His residues at positions 107 and 131.,function:Receptor for progesterone.,similarity:Belongs to the cytochrome b5 family. MAPR subfamily.,similarity:Contains 1 cytochrome b5 heme-binding domain.,tissue specificity:Widely expressed, with highest expression in liver and kidney., |
| <b>Background</b>                | This gene encodes a putative membrane-associated progesterone steroid receptor. The protein is expressed predominantly in the liver and kidney. [provided by RefSeq, Mar 2010],  |
| <b>matters needing attention</b> | Avoid repeated freezing and thawing!   |

**Usage suggestions**

This product can be used in immunological reaction related experiments. For more information, please consult technical personnel.

**Products Images**

Western blot analysis of lysates from U2OS cells, primary antibody was diluted at 1:1000, 4° over night