

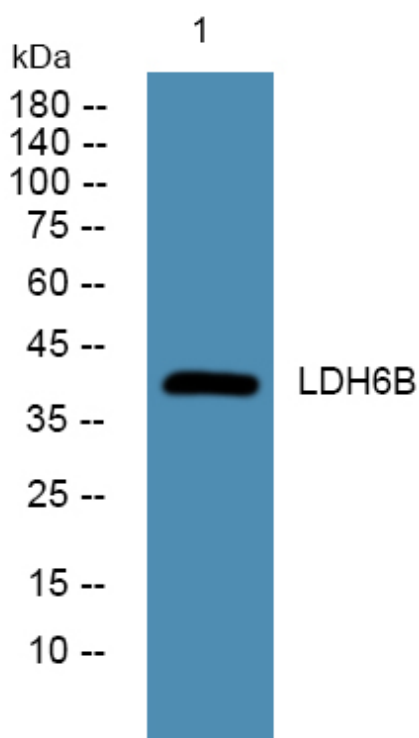


# LDH6B Polyclonal Antibody

<b>Catalog No</b>	YP-Ab-05698
<b>Isotype</b>	IgG
<b>Reactivity</b>	Human;Rat;Mouse;
<b>Applications</b>	WB;ELISA
<b>Gene Name</b>	LDHAL6B LDHAL6 LDHL
<b>Protein Name</b>	L-lactate dehydrogenase A-like 6B (EC 1.1.1.27)
<b>Immunogen</b>	Synthesized peptide derived from human protein . at AA range: 320-400
<b>Specificity</b>	LDH6B Polyclonal Antibody detects endogenous levels of protein.
<b>Formulation</b>	Liquid in PBS containing 50% glycerol, and 0.02% sodium azide.
<b>Source</b>	Polyclonal, Rabbit,IgG
<b>Purification</b>	The antibody was affinity-purified from rabbit antiserum by affinity-chromatography using epitope-specific immunogen.
<b>Dilution</b>	WB 1:500-2000 ELISA 1:5000-20000
<b>Concentration</b>	1 mg/ml
<b>Purity</b>	≥90%
<b>Storage Stability</b>	-20°C/1 year
<b>Synonyms</b>	
<b>Observed Band</b>	41kD
<b>Cell Pathway</b>	nucleus,mitochondrion,mitochondrial matrix,
<b>Tissue Specificity</b>	Testis specific.
<b>Function</b>	catalytic activity:(S)-lactate + NAD(+) = pyruvate + NADH.,caution:It is uncertain whether Met-1 or Met-50 is the initiator.,developmental stage:Higher expression level in adult testis as compared to 6-week-old fetal testis.,pathway:Fermentation; pyruvate fermentation to lactate; (S)-lactate from pyruvate: step 1/1.,similarity:Belongs to the LDH/MDH superfamily. LDH family.,tissue specificity:Testis specific.,
<b>Background</b>	catalytic activity:(S)-lactate + NAD(+) = pyruvate + NADH.,caution:It is uncertain whether Met-1 or Met-50 is the initiator.,developmental stage:Higher expression level in adult testis as compared to 6-week-old fetal testis.,pathway:Fermentation; pyruvate fermentation to lactate; (S)-lactate from pyruvate: step 1/1.,similarity:Belongs to the LDH/MDH superfamily. LDH family.,tissue specificity:Testis specific.,
<b>matters needing attention</b>	Avoid repeated freezing and thawing!

**Usage suggestions**

This product can be used in immunological reaction related experiments. For more information, please consult technical personnel.

**Products Images**

Western blot analysis of lysates from K562 cells, primary antibody was diluted at 1:1000, 4° over night