

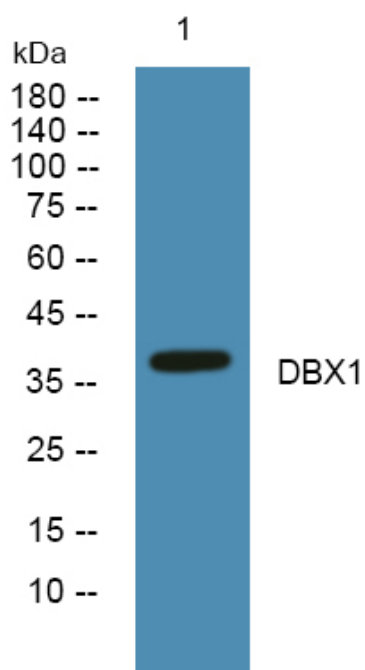


DBX1 Polyclonal Antibody

Catalog No	YP-Ab-05643
Isotype	IgG
Reactivity	Human;Rat;Mouse
Applications	WB;ELISA
Gene Name	DBX1
Protein Name	Homeobox protein DBX1 (Developing brain homeobox protein 1)
Immunogen	Synthesized peptide derived from part region of human protein
Specificity	DBX1 Polyclonal Antibody detects endogenous levels of protein.
Formulation	Liquid in PBS containing 50% glycerol, and 0.02% sodium azide.
Source	Polyclonal, Rabbit,IgG
Purification	The antibody was affinity-purified from rabbit antiserum by affinity-chromatography using epitope-specific immunogen.
Dilution	WB 1:500-2000 ELISA 1:5000-20000
Concentration	1 mg/ml
Purity	≥90%
Storage Stability	-20°C/1 year
Synonyms	
Observed Band	37kD
Cell Pathway	Nucleus .
Tissue Specificity	
Function	
Background	DBX1 (Developing Brain Homeobox 1) is a Protein Coding gene. Diseases associated with DBX1 include Central Hypoventilation Syndrome, Congenital. Could have a role in patterning the central nervous system during embryogenesis. Has a key role in regulating the distinct phenotypic features that distinguish two major classes of ventral interneurons, V0 and V1 neurons. Regulates the transcription factor profile, neurotransmitter phenotype, intraspinal migratory path and axonal trajectory of V0 neurons, features that differentiate them from an adjacent set of V1 neurons (By similarity).
matters needing attention	Avoid repeated freezing and thawing!

**Usage suggestions**

This product can be used in immunological reaction related experiments. For more information, please consult technical personnel.

Products Images

Western blot analysis of lysates from K562 cells, primary antibody was diluted at 1:1000, 4° over night