



GBB1 Polyclonal Antibody

Catalog No	YP-Ab-05627
Isotype	IgG
Reactivity	Human;Mouse;Rat
Applications	WB;ELISA
Gene Name	GNB1
Protein Name	Guanine nucleotide-binding protein G(I)/G(S)/G(T) subunit beta-1 (Transducin beta chain 1)
Immunogen	Synthesized peptide derived from part region of human protein
Specificity	GBB1 Polyclonal Antibody detects endogenous levels of protein.
Formulation	Liquid in PBS containing 50% glycerol, and 0.02% sodium azide.
Source	Polyclonal, Rabbit,IgG
Purification	The antibody was affinity-purified from rabbit antiserum by affinity-chromatography using epitope-specific immunogen.
Dilution	WB 1:500-2000 ELISA 1:5000-20000
Concentration	1 mg/ml
Purity	≥90%
Storage Stability	-20°C/1 year
Synonyms	
Observed Band	37kD
Cell Pathway	photoreceptor inner segment,intracellular,lysosomal membrane,cytosol,heterotrimeric G-protein complex,plasma membrane,membrane,dendrite,photoreceptor outer segment membrane,myelin sheath,cell body,extracellular exosome,
Tissue Specificity	B-cell lymphoma,Brain,Fetal brain cortex,Liver,Melanoma,Muscle,Ovarian carcinoma,PC
Function	function:Guanine nucleotide-binding proteins (G proteins) are involved as a modulator or transducer in various transmembrane signaling systems. The beta and gamma chains are required for the GTPase activity, for replacement of GDP by GTP, and for G protein-effector interaction.,similarity:Belongs to the WD repeat G protein beta family.,similarity:Contains 7 WD repeats.,subunit:G proteins are composed of 3 units, alpha, beta and gamma. Interacts with ARHGEF18.,
Background	Heterotrimeric guanine nucleotide-binding proteins (G proteins), which integrate signals between receptors and effector proteins, are composed of an alpha, a beta, and a gamma subunit. These subunits are encoded by families of related genes. This gene encodes a beta subunit. Beta subunits are important regulators of alpha subunits, as well as of certain signal transduction receptors and effectors. Alternative splicing results in multiple transcript variants. [provided by RefSeq, Sep 2013],

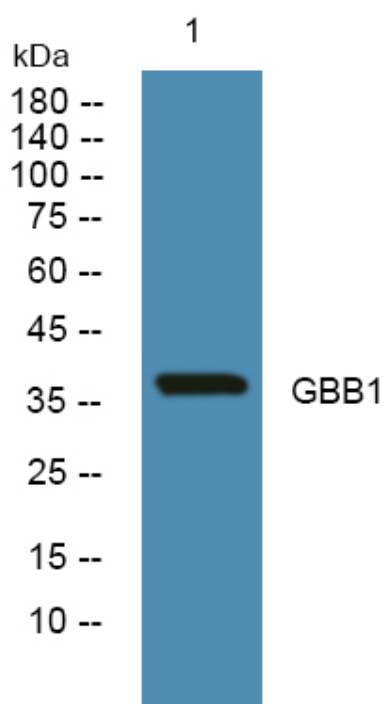
**matters needing attention**

Avoid repeated freezing and thawing!

Usage suggestions

This product can be used in immunological reaction related experiments. For more information, please consult technical personnel.

Products Images



Western blot analysis of lysates from SW480 cells, primary antibody was diluted at 1:1000, 4° over night