



# SAR1A Polyclonal Antibody

<b>Catalog No</b>	YP-Ab-05622
<b>Isotype</b>	IgG
<b>Reactivity</b>	Human;Mouse
<b>Applications</b>	WB;ELISA
<b>Gene Name</b>	SAR1A SAR1 SARA SARA1
<b>Protein Name</b>	GTP-binding protein SAR1a (COPII-associated small GTPase)
<b>Immunogen</b>	Synthesized peptide derived from part region of human protein
<b>Specificity</b>	SAR1A Polyclonal Antibody detects endogenous levels of protein.
<b>Formulation</b>	Liquid in PBS containing 50% glycerol, and 0.02% sodium azide.
<b>Source</b>	Polyclonal, Rabbit,IgG
<b>Purification</b>	The antibody was affinity-purified from rabbit antiserum by affinity-chromatography using epitope-specific immunogen.
<b>Dilution</b>	WB 1:500-2000 ELISA 1:5000-20000
<b>Concentration</b>	1 mg/ml
<b>Purity</b>	≥90%
<b>Storage Stability</b>	-20°C/1 year
<b>Synonyms</b>	
<b>Observed Band</b>	21kD
<b>Cell Pathway</b>	Endoplasmic reticulum . Golgi apparatus .
<b>Tissue Specificity</b>	Bone marrow,Kidney,Lung,Skin,
<b>Function</b>	function:Involved in transport from the endoplasmic reticulum to the Golgi apparatus (By similarity). Required to maintain SEC16A localization at discrete locations on the ER membrane perhaps by preventing its dissociation. SAR1A-GTP-dependent assembly of SEC16A on the ER membrane forms an organized scaffold defining endoplasmic reticulum exit sites (ERES).,similarity:Belongs to the small GTPase superfamily.,similarity:Belongs to the small GTPase superfamily. SAR1 family.,
<b>Background</b>	function:Involved in transport from the endoplasmic reticulum to the Golgi apparatus (By similarity). Required to maintain SEC16A localization at discrete locations on the ER membrane perhaps by preventing its dissociation. SAR1A-GTP-dependent assembly of SEC16A on the ER membrane forms an organized scaffold defining endoplasmic reticulum exit sites (ERES).,similarity:Belongs to the small GTPase superfamily.,similarity:Belongs to the small GTPase superfamily. SAR1 family.,

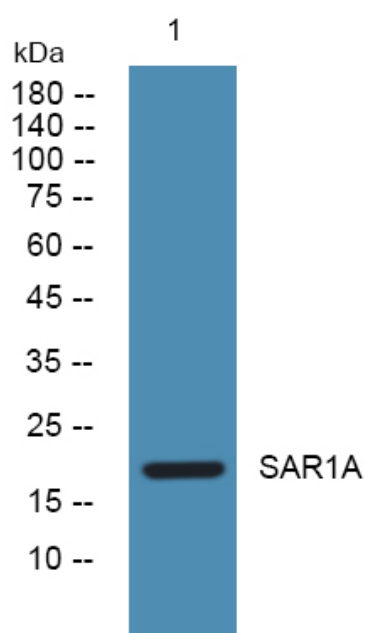
**matters needing attention**

Avoid repeated freezing and thawing!

**Usage suggestions**

This product can be used in immunological reaction related experiments. For more information, please consult technical personnel.

## Products Images



Western blot analysis of lysates from K562 cells, primary antibody was diluted at 1:1000, 4° over night