



FOLR2 Polyclonal Antibody

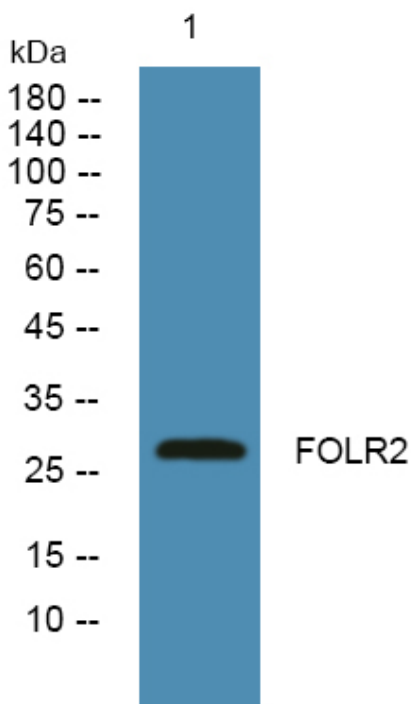
Catalog No	YP-Ab-05588
Isotype	IgG
Reactivity	Human;Mouse
Applications	WB;ELISA
Gene Name	FOLR2
Protein Name	Folate receptor beta (FR-beta) (Folate receptor 2) (Folate receptor, fetal/placental) (Placental folate-binding protein) (FBP)
Immunogen	Synthesized peptide derived from part region of human protein
Specificity	FOLR2 Polyclonal Antibody detects endogenous levels of protein.
Formulation	Liquid in PBS containing 50% glycerol, and 0.02% sodium azide.
Source	Polyclonal, Rabbit,IgG
Purification	The antibody was affinity-purified from rabbit antiserum by affinity-chromatography using epitope-specific immunogen.
Dilution	WB 1:500-2000 ELISA 1:5000-20000
Concentration	1 mg/ml
Purity	≥90%
Storage Stability	-20°C/1 year
Synonyms	
Observed Band	28kD
Cell Pathway	Cell membrane; Lipid-anchor, GPI-anchor. Secreted .
Tissue Specificity	Expressed in placenta and hematopoietic cells. Expression is increased in malignant tissues.
Function	function: Binds to folate and reduced folic acid derivatives and mediates delivery of 5-methyltetrahydrofolate to the interior of cells.,PTM: Eight disulfide bonds are present.,PTM: N-glycosylated.,similarity: Belongs to the folate receptor family.,tissue specificity: Expressed in placenta and hematopoietic cells. Expression is increased in malignant tissues.,
Background	The protein encoded by this gene is a member of the folate receptor (FOLR) family, and these genes exist in a cluster on chromosome 11. Members of this gene family have a high affinity for folic acid and for several reduced folic acid derivatives, and they mediate delivery of 5-methyltetrahydrofolate to the interior of cells. This protein has a 68% and 79% sequence homology with the FOLR1 and FOLR3 proteins, respectively. Although this protein was originally thought to be specific to placenta, it can also exist in other tissues, and it may play a role in the transport of methotrexate in synovial macrophages in rheumatoid arthritis patients. Multiple transcript variants that encode the same protein have been found for this gene. [provided by RefSeq, Jul 2008],

**matters needing attention**

Avoid repeated freezing and thawing!

Usage suggestions

This product can be used in immunological reaction related experiments. For more information, please consult technical personnel.

Products Images

Western blot analysis of lysates from SH-SY5Y cells, primary antibody was diluted at 1:1000, 4° over night