



# RNF5 Polyclonal Antibody

<b>Catalog No</b>	YP-Ab-05562
<b>Isotype</b>	IgG
<b>Reactivity</b>	Human;Mouse;Rat
<b>Applications</b>	WB;ELISA
<b>Gene Name</b>	RNF5 G16 NG2 RMA1
<b>Protein Name</b>	E3 ubiquitin-protein ligase RNF5 (EC 6.3.2.-) (Protein G16) (RING finger protein 5) (Ram1 homolog) (HsRma1)
<b>Immunogen</b>	Synthesized peptide derived from part region of human protein
<b>Specificity</b>	RNF5 Polyclonal Antibody detects endogenous levels of protein.
<b>Formulation</b>	Liquid in PBS containing 50% glycerol, and 0.02% sodium azide.
<b>Source</b>	Polyclonal, Rabbit,IgG
<b>Purification</b>	The antibody was affinity-purified from rabbit antiserum by affinity-chromatography using epitope-specific immunogen.
<b>Dilution</b>	WB 1:500-2000 ELISA 1:5000-20000
<b>Concentration</b>	1 mg/ml
<b>Purity</b>	≥90%
<b>Storage Stability</b>	-20°C/1 year
<b>Synonyms</b>	
<b>Observed Band</b>	19kD
<b>Cell Pathway</b>	Cell membrane ; Multi-pass membrane protein . Mitochondrion membrane ; Multi-pass membrane protein . Endoplasmic reticulum membrane ; Multi-pass membrane protein . Predominantly located in the plasma membrane, with some localization occurring within cytoplasmic organelles. .
<b>Tissue Specificity</b>	Widely expressed.
<b>Function</b>	function:Has E2-dependent E3 ubiquitin-protein ligase activity. May function together with E2 ubiquitin-conjugating enzymes UBE2D1/UBCH5A and UBE2D2/UBC4. Mediates ubiquitination of PXN/paxillin and Salmonella type III secreted protein sopA. May be involved in regulation of cell motility and localization of PXN/paxillin.,similarity:Contains 1 RING-type zinc finger.,subcellular location:Predominantly located in the plasma membrane, with some localization occurring within cytoplasmic organelles.,subunit:Interacts with PXN. Interacts with Salmonella typhimurium sopA. Interacts with JAMP.,tissue specificity:Widely expressed.,
<b>Background</b>	The protein encoded by this gene contains a RING finger, which is a motif known to be involved in protein-protein interactions. This protein is a membrane-bound ubiquitin ligase. It can regulate cell motility by targeting paxillin ubiquitination and altering the distribution and localization of paxillin in cytoplasm and cell focal



adhesions. [provided by RefSeq, Jul 2008],

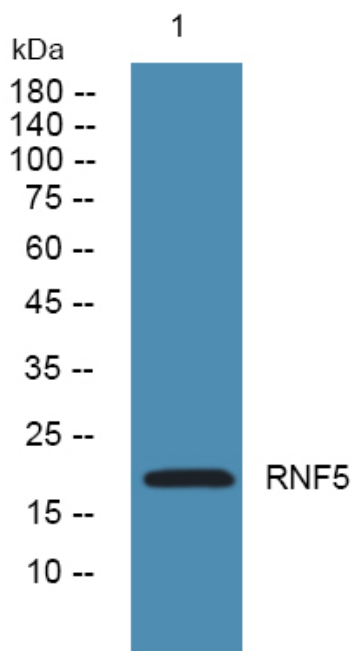
**matters needing attention**

Avoid repeated freezing and thawing!

**Usage suggestions**

This product can be used in immunological reaction related experiments. For more information, please consult technical personnel.

**Products Images**



Western blot analysis of lysates from A431 cells, primary antibody was diluted at 1:1000, 4° over night