

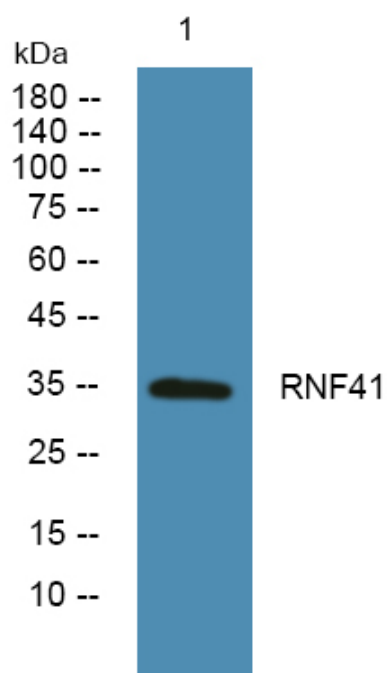


# RNF41 Polyclonal Antibody

<b>Catalog No</b>	YP-Ab-05558
<b>Isotype</b>	IgG
<b>Reactivity</b>	Human;Mouse
<b>Applications</b>	WB;ELISA
<b>Gene Name</b>	RNF41 FLRF NRDP1 SBB103
<b>Protein Name</b>	E3 ubiquitin-protein ligase NRDP1 (EC 6.3.2.-) (RING finger protein 41)
<b>Immunogen</b>	Synthesized peptide derived from part region of human protein
<b>Specificity</b>	RNF41 Polyclonal Antibody detects endogenous levels of protein.
<b>Formulation</b>	Liquid in PBS containing 50% glycerol, and 0.02% sodium azide.
<b>Source</b>	Polyclonal, Rabbit,IgG
<b>Purification</b>	The antibody was affinity-purified from rabbit antiserum by affinity-chromatography using epitope-specific immunogen.
<b>Dilution</b>	WB 1:500-2000 ELISA 1:5000-20000
<b>Concentration</b>	1 mg/ml
<b>Purity</b>	≥90%
<b>Storage Stability</b>	-20°C/1 year
<b>Synonyms</b>	
<b>Observed Band</b>	34kD
<b>Cell Pathway</b>	cytosol,
<b>Tissue Specificity</b>	Detected in ovary, testis and prostate.
<b>Function</b>	function:Acts as E3 ubiquitin-protein ligase and regulates the degradation of target proteins, such as ERBB3.,pathway:Protein modification; protein ubiquitination.,PTM:Autoubiquitinated.,similarity:Contains 1 RING-type zinc finger.,similarity:Contains 1 SIAH-type zinc finger.,subunit:Interacts with USP8 and ERBB3.,tissue specificity:Detected in ovary, testis and prostate.,
<b>Background</b>	This gene encodes an E3 ubiquitin ligase. The encoded protein plays a role in type 1 cytokine receptor signaling by controlling the balance between JAK2-associated cytokine receptor degradation and ectodomain shedding. Alternative splicing results in multiple transcript variants. [provided by RefSeq, Jun 2011],
<b>matters needing attention</b>	Avoid repeated freezing and thawing!

**Usage suggestions**

This product can be used in immunological reaction related experiments. For more information, please consult technical personnel.

**Products Images**

Western blot analysis of lysates from DU145 cells, primary antibody was diluted at 1:1000, 4° over night