

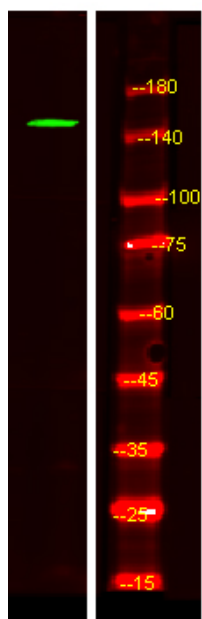


CNTP4 Polyclonal Antibody

Catalog No	YP-Ab-05494
Isotype	IgG
Reactivity	Human;Mouse
Applications	WB;ELISA
Gene Name	CNTNAP4 CASPR4 KIAA1763
Protein Name	Contactin-associated protein-like 4 (Cell recognition molecule Caspr4)
Immunogen	Synthesized peptide derived from part region of human protein
Specificity	CNTP4 Polyclonal Antibody detects endogenous levels of protein.
Formulation	Liquid in PBS containing 50% glycerol, and 0.02% sodium azide.
Source	Polyclonal, Rabbit,IgG
Purification	The antibody was affinity-purified from rabbit antiserum by affinity-chromatography using epitope-specific immunogen.
Dilution	WB 1:500-2000 ELISA 1:5000-20000
Concentration	1 mg/ml
Purity	≥90%
Storage Stability	-20°C/1 year
Synonyms	
Observed Band	143kD
Cell Pathway	Cell junction, synapse, presynaptic cell membrane ; Single-pass type I membrane protein . Specifically present within the presynaptic compartment of synapses. .
Tissue Specificity	Brain,Testis,
Function	similarity:Belongs to the neurexin family.,similarity:Contains 1 F5/8 type C domain.,similarity:Contains 1 fibrinogen C-terminal domain.,similarity:Contains 2 EGF-like domains.,similarity:Contains 4 laminin G-like domains.,
Background	This gene encodes a member of the neurexin protein family. Members of this family function in the vertebrate nervous system as cell adhesion molecules and receptors. This protein contains epidermal growth factor repeats and laminin G domains. In addition, it includes an F5/8 type C domain, discoidin/neuropilin- and fibrinogen-like domains, and thrombospondin N-terminal-like domains. This protein may also play a role in proper neurotransmission in the dopaminergic and GABAergic systems and mutations in this gene may be associated with certain psychiatric illnesses. A polymorphism in an intron of this gene may be associated with longevity. [provided by RefSeq, Apr 2016],
matters needing attention	Avoid repeated freezing and thawing!

**Usage suggestions**

This product can be used in immunological reaction related experiments. For more information, please consult technical personnel.

Products Images

Western Blot analysis of HEK293 lysis, using primary antibody at 1:1000 dilution. Secondary antibody(catalog#:RS23920) was diluted at 1:10000