

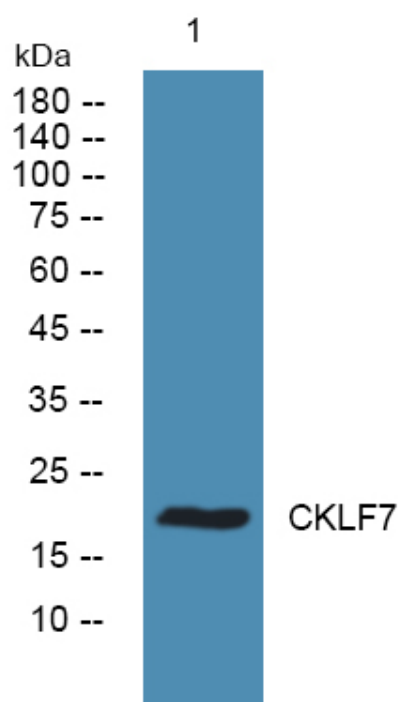


CKLF7 Polyclonal Antibody

Catalog No	YP-Ab-05473
Isotype	IgG
Reactivity	Human;Mouse
Applications	WB;ELISA
Gene Name	CMTM7 CKLFSF7
Protein Name	CKLF-like MARVEL transmembrane domain-containing protein 7 (Chemokine-like factor superfamily member 7)
Immunogen	Synthesized peptide derived from part region of human protein
Specificity	CKLF7 Polyclonal Antibody detects endogenous levels of protein.
Formulation	Liquid in PBS containing 50% glycerol, and 0.02% sodium azide.
Source	Polyclonal, Rabbit,IgG
Purification	The antibody was affinity-purified from rabbit antiserum by affinity-chromatography using epitope-specific immunogen.
Dilution	WB 1:500-2000 ELISA 1:5000-20000
Concentration	1 mg/ml
Purity	≥90%
Storage Stability	-20°C/1 year
Synonyms	
Observed Band	19kD
Cell Pathway	Membrane; Multi-pass membrane protein.
Tissue Specificity	Highly expressed in leukocytes.
Function	similarity:Belongs to the chemokine-like factor family.,similarity:Contains 1 MARVEL domain.,tissue specificity:Highly expressed in leukocytes.,
Background	This gene belongs to the chemokine-like factor gene superfamily, a novel family that is similar to the chemokine and transmembrane 4 superfamilies. This gene is one of several chemokine-like factor genes located in a cluster on chromosome 3. This gene acts as a tumor suppressor that regulates G1/S transition in the cell cycle, and epidermal growth factor receptor/protein kinase B signaling during tumor pathogenesis. Alternative splicing results in multiple transcript variants encoding different isoforms. [provided by RefSeq, Feb 2016],
matters needing attention	Avoid repeated freezing and thawing!

**Usage suggestions**

This product can be used in immunological reaction related experiments. For more information, please consult technical personnel.

Products Images

Western blot analysis of lysates from U2OS cells, primary antibody was diluted at 1:1000, 4° over night