



KIF4B Polyclonal Antibody

Catalog No	YP-Ab-05470
Isotype	IgG
Reactivity	Human;Rat;Mouse;
Applications	WB;ELISA
Gene Name	KIF4B
Protein Name	Chromosome-associated kinesin KIF4B (Chromokinesin-B)
Immunogen	Synthesized peptide derived from part region of human protein
Specificity	KIF4B Polyclonal Antibody detects endogenous levels of protein.
Formulation	Liquid in PBS containing 50% glycerol, and 0.02% sodium azide.
Source	Polyclonal, Rabbit,IgG
Purification	The antibody was affinity-purified from rabbit antiserum by affinity-chromatography using epitope-specific immunogen.
Dilution	WB 1:500-2000 ELISA 1:5000-20000
Concentration	1 mg/ml
Purity	≥90%
Storage Stability	-20°C/1 year
Synonyms	
Observed Band	135kD
Cell Pathway	Nucleus matrix . Cytoplasm, cytoskeleton .
Tissue Specificity	Specifically expressed in testis.
Function	function:Motor protein that translocates PRC1 to the plus ends of interdigitating spindle microtubules during the metaphase to anaphase transition, an essential step for the formation of an organized central spindle midzone and midbody and for successful cytokinesis. May play a role in mitotic chromosomal positioning and bipolar spindle stabilization.,sequence caution:Contaminating sequence. Potential poly-A sequence.,similarity:Belongs to the kinesin-like protein family.,similarity:Belongs to the kinesin-like protein family. Chromokinesin subfamily.,similarity:Contains 1 kinesin-motor domain.,subcellular location:Not present in the nucleolus. In early mitosis, associated with the mitotic spindle, in anaphase, localized to the spindle midzone and, in telophase and cytokinesis, to the midbody. In late cytokinesis, found in the center of the midbody. Associated with chromosomes at all stag
Background	kinesin family member 4B(KIF4B) Homo sapiens This gene is an intronless retrocopy of kinesin family member 4A. The protein encoded by this gene is a microtubule-based motor protein that plays vital roles in anaphase spindle



dynamics and cytokinesis. [provided by RefSeq, Jul 2016],

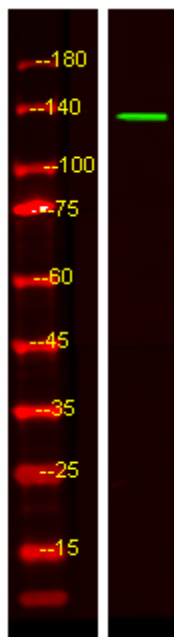
matters needing attention

Avoid repeated freezing and thawing!

Usage suggestions

This product can be used in immunological reaction related experiments. For more information, please consult technical personnel.

Products Images



Western Blot analysis of HEK293 lysis, using primary antibody at 1:1000 dilution. Secondary antibody(catalog#:RS23920) was diluted at 1:10000