

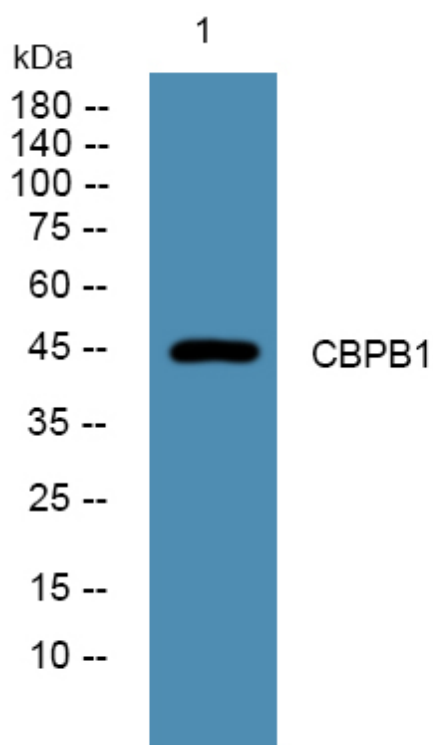


CBPB1 Polyclonal Antibody

Catalog No	YP-Ab-05429
Isotype	IgG
Reactivity	Human;Rat;Mouse;
Applications	WB;ELISA
Gene Name	CPB1 CPB PCPB
Protein Name	Carboxypeptidase B (EC 3.4.17.2) (Pancreas-specific protein) (PASP)
Immunogen	Synthesized peptide derived from part region of human protein
Specificity	CBPB1 Polyclonal Antibody detects endogenous levels of protein.
Formulation	Liquid in PBS containing 50% glycerol, and 0.02% sodium azide.
Source	Polyclonal, Rabbit,IgG
Purification	The antibody was affinity-purified from rabbit antiserum by affinity-chromatography using epitope-specific immunogen.
Dilution	WB 1:500-2000 ELISA 1:5000-20000
Concentration	1 mg/ml
Purity	≥90%
Storage Stability	-20°C/1 year
Synonyms	
Observed Band	45kD
Cell Pathway	Secreted . Zymogen granule lumen .
Tissue Specificity	Pancreas.
Function	catalytic activity:Preferential release of a C-terminal lysine or arginine amino acid.,cofactor:Binds 1 zinc ion per subunit.,similarity:Belongs to the peptidase M14 family.,tissue specificity:Pancreas.,
Background	Three different procarboxypeptidases A and two different procarboxypeptidases B have been isolated. The B1 and B2 forms differ from each other mainly in isoelectric point. Carboxypeptidase B1 is a highly tissue-specific protein and is a useful serum marker for acute pancreatitis and dysfunction of pancreatic transplants. It is not elevated in pancreatic carcinoma. [provided by RefSeq, Jul 2008],
matters needing attention	Avoid repeated freezing and thawing!
Usage suggestions	This product can be used in immunological reaction related experiments. For more information, please consult technical personnel.



Products Images



Western blot analysis of lysates from HCT116 cells,
primary antibody was diluted at 1:1000, 4°over night