

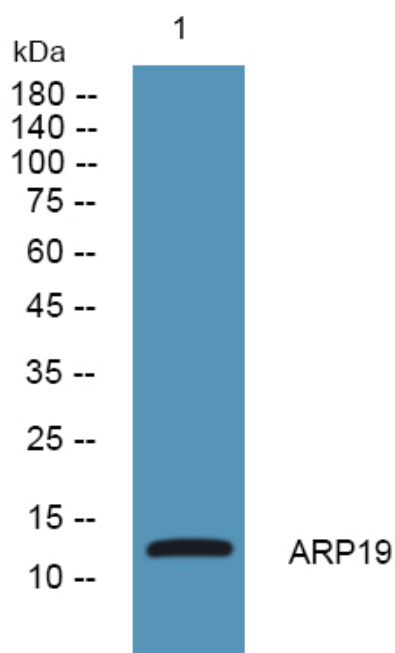


ARP19 Polyclonal Antibody

Catalog No	YP-Ab-05417
Isotype	IgG
Reactivity	Human;Mouse;Rat
Applications	WB;ELISA
Gene Name	ARPP19
Protein Name	cAMP-regulated phosphoprotein 19 (ARPP-19)
Immunogen	Synthesized peptide derived from part region of human protein AA range: 1-50
Specificity	ARP19 Polyclonal Antibody detects endogenous levels of protein.
Formulation	Liquid in PBS containing 50% glycerol, and 0.02% sodium azide.
Source	Polyclonal, Rabbit,IgG
Purification	The antibody was affinity-purified from rabbit antiserum by affinity-chromatography using epitope-specific immunogen.
Dilution	WB 1:500-2000 ELISA 1:5000-20000
Concentration	1 mg/ml
Purity	≥90%
Storage Stability	-20°C/1 year
Synonyms	
Observed Band	12kD
Cell Pathway	Cytoplasm .
Tissue Specificity	Brain,Epithelium,Placenta,Platelet,Spinal cord,
Function	function:May enhance GAP-43 expression by binding to the NGF-regulatory region of its mRNA.,PTM:Phosphorylated by PKA.,similarity:Belongs to the endosulfine family.,
Background	The 19-kD cAMP-regulated phosphoprotein plays a role in regulating mitosis by inhibiting protein phosphatase-2A (PP2A; see MIM 176915) (summary by Gharbi-Ayachi et al., 2010 [PubMed 21164014]).[supplied by OMIM, Feb 2011],
matters needing attention	Avoid repeated freezing and thawing!
Usage suggestions	This product can be used in immunological reaction related experiments. For more information, please consult technical personnel.



Products Images



Western blot analysis of lysates from SW480 cells,
primary antibody was diluted at 1:1000, 4° over night