



# CALR3 Polyclonal Antibody

<b>Catalog No</b>	YP-Ab-05416
<b>Isotype</b>	IgG
<b>Reactivity</b>	Human;Mouse
<b>Applications</b>	WB;ELISA
<b>Gene Name</b>	CALR3 CRT2
<b>Protein Name</b>	Calreticulin-3 (Calreticulin-2) (Calsperin)
<b>Immunogen</b>	Synthesized peptide derived from part region of human protein
<b>Specificity</b>	CALR3 Polyclonal Antibody detects endogenous levels of protein.
<b>Formulation</b>	Liquid in PBS containing 50% glycerol, and 0.02% sodium azide.
<b>Source</b>	Polyclonal, Rabbit,IgG
<b>Purification</b>	The antibody was affinity-purified from rabbit antiserum by affinity-chromatography using epitope-specific immunogen.
<b>Dilution</b>	WB 1:500-2000 ELISA 1:5000-20000
<b>Concentration</b>	1 mg/ml
<b>Purity</b>	≥90%
<b>Storage Stability</b>	-20°C/1 year
<b>Synonyms</b>	
<b>Observed Band</b>	42kD
<b>Cell Pathway</b>	Endoplasmic reticulum lumen .
<b>Tissue Specificity</b>	Testis specific.
<b>Function</b>	domain:Can be divided into a N-terminal globular domain, a proline-rich P-domain forming an elongated arm-like structure and a C-terminal acidic domain. The P-domain binds one molecule of calcium with high affinity, whereas the acidic C-domain binds multiple calcium ions with low affinity.,domain:The interaction with glycans occurs through a binding site in the globular lectin domain.,domain:The zinc binding sites are localized to the N-domain.,function:Molecular calcium binding chaperone promoting folding, oligomeric assembly and quality control in the ER via the calreticulin/calnexin cycle. This lectin may interact transiently with almost all of the monoglucosylated glycoproteins that are synthesized in the ER.,similarity:Belongs to the calreticulin family.,subunit:Component of an EIF2 complex at least composed of CUGBP1, CALR, CALR3, EIF2S1, EIF2S2, HSP90B1 and HSPA5.,tissue specifici
<b>Background</b>	The protein encoded by this gene belongs to the calreticulin family, members of which are calcium-binding chaperones localized mainly in the endoplasmic reticulum. This protein is also localized to the endoplasmic reticulum lumen,



however, its capacity for calcium-binding may be absent or much lower than other family members. This gene is specifically expressed in the testis, and may be required for sperm fertility. Mutation in this gene has been associated with familial hypertrophic cardiomyopathy. [provided by RefSeq, Dec 2011],

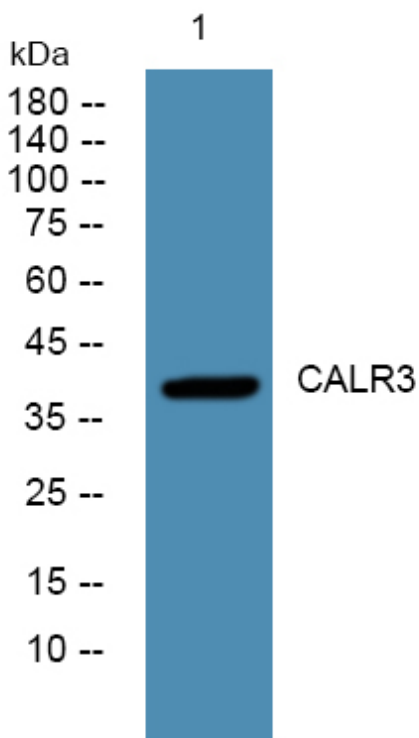
**matters needing attention**

Avoid repeated freezing and thawing!

**Usage suggestions**

This product can be used in immunological reaction related experiments. For more information, please consult technical personnel.

**Products Images**



Western blot analysis of lysates from A431 cells, primary antibody was diluted at 1:1000, 4° over night