



CALL3 Polyclonal Antibody

Catalog No	YP-Ab-05408
Isotype	IgG
Reactivity	Human;Mouse;Rat
Applications	WB;ELISA
Gene Name	CALML3
Protein Name	Calmodulin-like protein 3 (CaM-like protein) (CLP) (Calmodulin-related protein NB-1)
Immunogen	Synthesized peptide derived from part region of human protein
Specificity	CALL3 Polyclonal Antibody detects endogenous levels of protein.
Formulation	Liquid in PBS containing 50% glycerol, and 0.02% sodium azide.
Source	Polyclonal, Rabbit,IgG
Purification	The antibody was affinity-purified from rabbit antiserum by affinity-chromatography using epitope-specific immunogen.
Dilution	WB 1:500-2000 ELISA 1:5000-20000
Concentration	1 mg/ml
Purity	≥90%
Storage Stability	-20°C/1 year
Synonyms	
Observed Band	16kD
Cell Pathway	extracellular exosome,
Tissue Specificity	Expressed in normal mammary, prostate, cervical, and epidermal tissues. It is greatly reduced or undetectable in transformed cells.
Function	function:May be similar to that of authentic calmodulin and may actually compete with calmodulin by binding, with different affinities, to cellular substrates.,induction:By human beta type transforming growth factor.,miscellaneous:Binds four calcium ions.,similarity:Belongs to the calmodulin family.,similarity:Contains 4 EF-hand domains.,tissue specificity:Expressed in normal mammary, prostate, cervical, and epidermal tissues. It is greatly reduced or undetectable in transformed cells.,
Background	function:May be similar to that of authentic calmodulin and may actually compete with calmodulin by binding, with different affinities, to cellular substrates.,induction:By human beta type transforming growth factor.,miscellaneous:Binds four calcium ions.,similarity:Belongs to the calmodulin family.,similarity:Contains 4 EF-hand domains.,tissue specificity:Expressed in normal mammary, prostate, cervical, and epidermal tissues. It is greatly reduced or undetectable in transformed cells.,

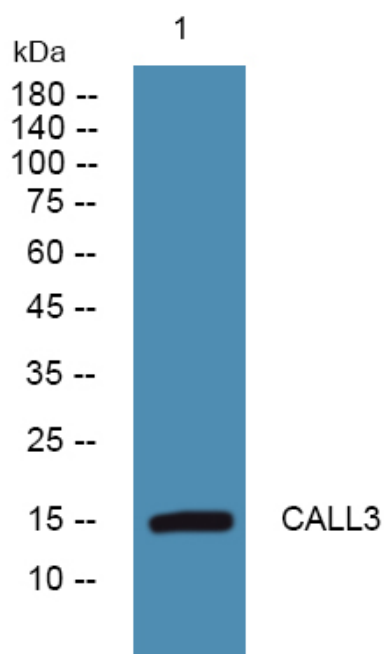
**matters needing attention**

Avoid repeated freezing and thawing!

Usage suggestions

This product can be used in immunological reaction related experiments. For more information, please consult technical personnel.

Products Images



Western blot analysis of lysates from PC12 cells, primary antibody was diluted at 1:1000, 4° over night