



BOK Polyclonal Antibody

Catalog No	YP-Ab-05371
Isotype	IgG
Reactivity	Human;Mouse;Rat
Applications	WB;ELISA
Gene Name	BOK BCL2L9
Protein Name	Bcl-2-related ovarian killer protein (hBOK) (Bcl-2-like protein 9) (Bcl2-L-9)
Immunogen	Synthesized peptide derived from human protein . at AA range: 10-90
Specificity	BOK Polyclonal Antibody detects endogenous levels of protein.
Formulation	Liquid in PBS containing 50% glycerol, and 0.02% sodium azide.
Source	Polyclonal, Rabbit,IgG
Purification	The antibody was affinity-purified from rabbit antiserum by affinity-chromatography using epitope-specific immunogen.
Dilution	WB 1:500-2000 ELISA 1:5000-20000
Concentration	1 mg/ml
Purity	≥90%
Storage Stability	-20°C/1 year
Synonyms	
Observed Band	23kD
Cell Pathway	[Isoform 1]: Mitochondrion membrane ; Single-pass membrane protein . Endoplasmic reticulum membrane ; Single-pass membrane protein . Mitochondrion inner membrane . Cytoplasm . Nucleus . Mitochondrion . Endoplasmic reticulum . Mitochondrion outer membrane . Early endosome membrane . Recycling endosome membrane . Nucleus outer membrane . Golgi apparatus, cis-Golgi network membrane . Golgi apparatus, trans-Golgi network membrane . Membrane . Nuclear and cytoplasmic compartments in the early stages of apoptosis and during apoptosis it associates with mitochondria (PubMed:19942931). In healthy cells, associates loosely with the membrane in a hit-and-run mode. The insertion and accumulation on membranes is enhanced through the activity of death signals, resulting in the integration of the membra
Tissue Specificity	Expressed mainly in oocytes; weak expression in granulosa cells of the developing follicles. In adult human ovaries, expressed in granulosa cells at all follicular stages, but expression in primordial/primary follicles granulosa cell is stronger than in secondary and antral follicles.
Function	function:May play a role in apoptosis.,similarity:Belongs to the Bcl-2 family.,tissue specificity:Expressed in brain, liver, appendix and lymphoid tissues.,
Background	The protein encoded by this gene belongs to the BCL2 family, members of which form homo- or heterodimers, and act as anti- or proapoptotic regulators that are



involved in a wide variety of cellular processes. Studies in rat show that this protein has restricted expression in reproductive tissues, interacts strongly with some antiapoptotic BCL2 proteins, not at all with proapoptotic BCL2 proteins, and induces apoptosis in transfected cells. Thus, this protein represents a proapoptotic member of the BCL2 family. [provided by RefSeq, Sep 2011],

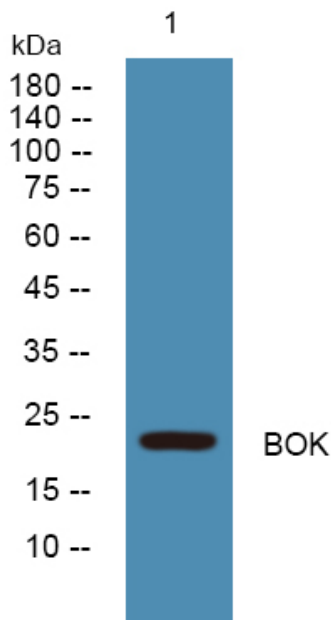
matters needing attention

Avoid repeated freezing and thawing!

Usage suggestions

This product can be used in immunological reaction related experiments. For more information, please consult technical personnel.

Products Images



Western blot analysis of lysates from U2OS cells, primary antibody was diluted at 1:1000, 4° over night