

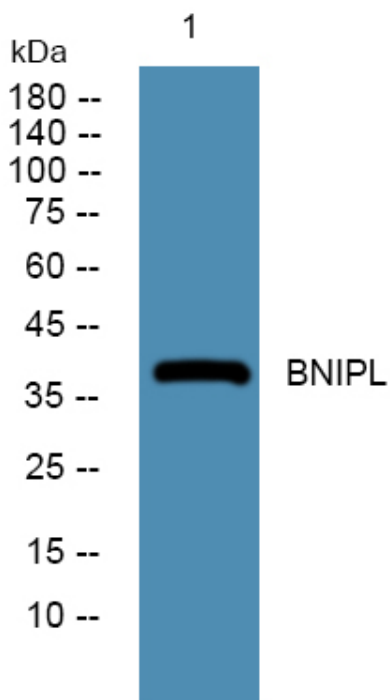


# BNIPL Polyclonal Antibody

<b>Catalog No</b>	YP-Ab-05370
<b>Isotype</b>	IgG
<b>Reactivity</b>	Human;Rat;Mouse;
<b>Applications</b>	WB;ELISA
<b>Gene Name</b>	BNIPL
<b>Protein Name</b>	Bcl-2/adenovirus E1B 19 kDa-interacting protein 2-like protein
<b>Immunogen</b>	Synthesized peptide derived from human protein . at AA range: 40-120
<b>Specificity</b>	BNIPL Polyclonal Antibody detects endogenous levels of protein.
<b>Formulation</b>	Liquid in PBS containing 50% glycerol, and 0.02% sodium azide.
<b>Source</b>	Polyclonal, Rabbit,IgG
<b>Purification</b>	The antibody was affinity-purified from rabbit antiserum by affinity-chromatography using epitope-specific immunogen.
<b>Dilution</b>	WB 1:500-2000 ELISA 1:5000-20000
<b>Concentration</b>	1 mg/ml
<b>Purity</b>	≥90%
<b>Storage Stability</b>	-20°C/1 year
<b>Synonyms</b>	
<b>Observed Band</b>	39kD
<b>Cell Pathway</b>	nucleus,cytosol,
<b>Tissue Specificity</b>	Isoform 2 is expressed in placenta and lung.
<b>Function</b>	function:May be a bridge molecule between BCL2 and ARHGAP1/CDC42 in promoting cell death.,similarity:Contains 1 CRAL-TRIO domain.,subunit:Homodimer. Interacts with BCL2, ARHGAP1, MIF and GFER.,tissue specificity:Isoform 2 is expressed in placenta and lung.,
<b>Background</b>	The protein encoded by this gene interacts with several other proteins, such as BCL2, ARHGAP1, MIF and GFER. It may function as a bridge molecule between BCL2 and ARHGAP1/CDC42 in promoting cell death. Alternatively spliced transcript variants encoding different isoforms have been described for this gene. [provided by RefSeq, Aug 2011],
<b>matters needing attention</b>	Avoid repeated freezing and thawing!
<b>Usage suggestions</b>	This product can be used in immunological reaction related experiments. For more information, please consult technical personnel.



## Products Images



Western blot analysis of lysates from K562 cells,  
primary antibody was diluted at 1:1000, 4°over night