

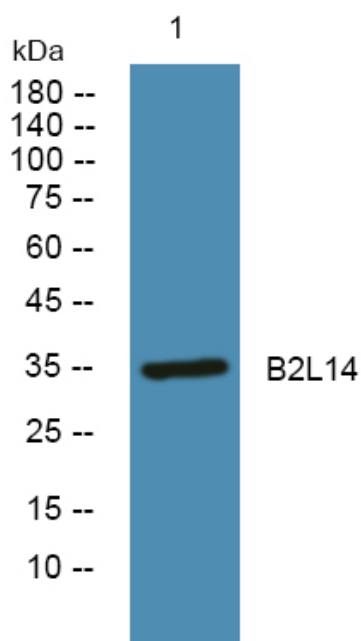


# B2L14 Polyclonal Antibody

<b>Catalog No</b>	YP-Ab-05327
<b>Isotype</b>	IgG
<b>Reactivity</b>	Human;Mouse
<b>Applications</b>	WB;ELISA
<b>Gene Name</b>	BCL2L14 BCLG
<b>Protein Name</b>	Apoptosis facilitator Bcl-2-like protein 14 (Bcl2-L-14) (Apoptosis regulator Bcl-G)
<b>Immunogen</b>	Synthesized peptide derived from human protein . at AA range: 200-280
<b>Specificity</b>	B2L14 Polyclonal Antibody detects endogenous levels of protein.
<b>Formulation</b>	Liquid in PBS containing 50% glycerol, and 0.02% sodium azide.
<b>Source</b>	Polyclonal, Rabbit,IgG
<b>Purification</b>	The antibody was affinity-purified from rabbit antiserum by affinity-chromatography using epitope-specific immunogen.
<b>Dilution</b>	WB 1:500-2000 ELISA 1:5000-20000
<b>Concentration</b>	1 mg/ml
<b>Purity</b>	≥90%
<b>Storage Stability</b>	-20°C/1 year
<b>Synonyms</b>	
<b>Observed Band</b>	35kD
<b>Cell Pathway</b>	Cytoplasm .; [Isoform 1]: Cytoplasm, cytosol. Diffusely distributed throughout the cytosol.; [Isoform 2]: Endomembrane system. Predominantly localized to cytosolic organelles.
<b>Tissue Specificity</b>	Isoform 1 is widely expressed. Isoform 2 is testis-specific.
<b>Function</b>	function:May play a role in apoptosis.,similarity:Belongs to the Bcl-2 family.,subcellular location:Diffusely distributed throughout the cytosol.,subcellular location:Predominantly localized to cytosolic organelles.,tissue specificity:Isoform 1 is widely expressed and isoform 2 is testis-specific.,
<b>Background</b>	The protein encoded by this gene belongs to the BCL2 protein family. BCL2 family members form hetero- or homodimers and act as anti- or pro-apoptotic regulators that are involved in a wide variety of cellular activities. Overexpression of this gene has been shown to induce apoptosis in cells. Three alternatively spliced transcript variants encoding two distinct isoforms have been reported for this gene. [provided by RefSeq, May 2009],
<b>matters needing attention</b>	Avoid repeated freezing and thawing!

**Usage suggestions**

This product can be used in immunological reaction related experiments. For more information, please consult technical personnel.

**Products Images**

Western blot analysis of lysates from PC12 cells, primary antibody was diluted at 1:1000, 4° over night.