



LGAT1 Polyclonal Antibody

| | |
|---------------------------|-----------------------------------------------------------------------------------------------------------------------------------------------------------------------------------------------------------------------------------------------------------------------------------------------------------------------------------------------------------------------------------------------------------------------------------------------------------------------------------------------------------------------------------------------------------------------------------------------------------------------------------------------------------------------------------------------------------------------------------------------------------|
| Catalog No | YP-Ab-05271 |
| Isotype | IgG |
| Reactivity | Human;Rat;Mouse; |
| Applications | WB;ELISA |
| Gene Name | LPGAT1 FAM34A KIAA0205 |
| Protein Name | Acyl-CoA:lysophosphatidylglycerol acyltransferase 1 (EC 2.3.1.-) |
| Immunogen | Synthesized peptide derived from human protein . at AA range: 180-260 |
| Specificity | LGAT1 Polyclonal Antibody detects endogenous levels of protein. |
| Formulation | Liquid in PBS containing 50% glycerol, and 0.02% sodium azide. |
| Source | Polyclonal, Rabbit,IgG |
| Purification | The antibody was affinity-purified from rabbit antiserum by affinity-chromatography using epitope-specific immunogen. |
| Dilution | WB 1:500-2000 ELISA 1:5000-20000 |
| Concentration | 1 mg/ml |
| Purity | ≥90% |
| Storage Stability | -20°C/1 year |
| Synonyms | |
| Observed Band | 40kD |
| Cell Pathway | Endoplasmic reticulum membrane ; Multi-pass membrane protein . |
| Tissue Specificity | Highly expressed in liver and placenta. Also expressed in peripheral blood, lung, kidney and brain. Detected at lower levels in colon. High expression is detected in brain and testis. |
| Function | domain:The HXXXXD motif is essential for acyltransferase activity and may constitute the binding site for the phosphate moiety of the glycerol-3-phosphate.,function:Lysophosphatidylglycerol (LPG) specific acyltransferase that recognizes various acyl-CoAs and LPGs as substrates but demonstrates a clear preference for long chain saturated fatty acyl-CoAs and oleoyl-CoA as acyl donors. Prefers oleoyl-LPG over palmitoyl-LPG as an acyl receptor and oleoyl-CoA over lauroyl-CoA as an acyl donor.,similarity:Belongs to the 1-acyl-sn-glycerol-3-phosphate acyltransferase family.,tissue specificity:Highly expressed in liver and placenta. Also expressed in peripheral blood, lung, kidney and brain. Detected at lower levels in colon., |
| Background | This gene encodes a member of the lysophospholipid acyltransferase family. The encoded protein catalyzes the reacylation of lysophosphatidylglycerol to phosphatidylglycerol, a membrane phospholipid that is an important precursor for the synthesis of cardiolipin. Alternative splicing results in multiple transcript |



variants. [provided by RefSeq, Mar 2016],

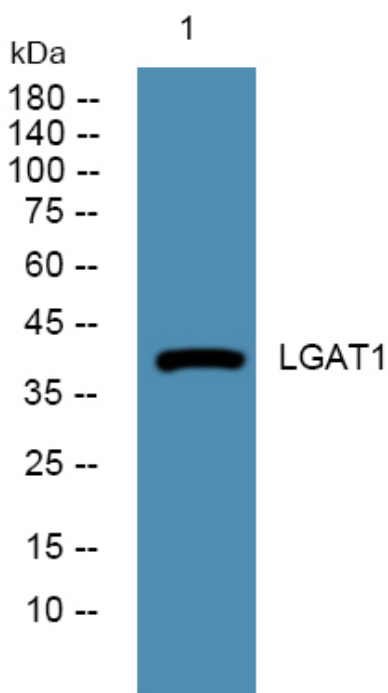
matters needing attention

Avoid repeated freezing and thawing!

Usage suggestions

This product can be used in immunological reaction related experiments. For more information, please consult technical personnel.

Products Images



Western blot analysis of lysates from U2OS cells, primary antibody was diluted at 1:1000, 4° over night