



# RL36L Polyclonal Antibody

<b>Catalog No</b>	YP-Ab-05255
<b>Isotype</b>	IgG
<b>Reactivity</b>	Human;Rat;Mouse;
<b>Applications</b>	WB;ELISA
<b>Gene Name</b>	RPL36AL
<b>Protein Name</b>	60S ribosomal protein L36a-like
<b>Immunogen</b>	Synthesized peptide derived from human protein . at AA range: 30-110
<b>Specificity</b>	RL36L Polyclonal Antibody detects endogenous levels of protein.
<b>Formulation</b>	Liquid in PBS containing 50% glycerol, and 0.02% sodium azide.
<b>Source</b>	Polyclonal, Rabbit,IgG
<b>Purification</b>	The antibody was affinity-purified from rabbit antiserum by affinity-chromatography using epitope-specific immunogen.
<b>Dilution</b>	WB 1:500-2000 ELISA 1:5000-20000
<b>Concentration</b>	1 mg/ml
<b>Purity</b>	≥90%
<b>Storage Stability</b>	-20°C/1 year
<b>Synonyms</b>	
<b>Observed Band</b>	11kD
<b>Cell Pathway</b>	Cytoplasm .
<b>Tissue Specificity</b>	Ubiquitously expressed.
<b>Function</b>	miscellaneous:This gene has no introns in its coding regions, and therefore, was most likely produced by retrotransposition of the original X-linked gene during evolution.,similarity:Belongs to the ribosomal protein L44e family.,tissue specificity:Ubiquitously expressed.,
<b>Background</b>	Cytoplasmic ribosomes, organelles that catalyze protein synthesis, consist of a small 40S subunit and a large 60S subunit. Together these subunits are composed of 4 RNA species and approximately 80 structurally distinct proteins. This gene encodes a ribosomal protein that is a component of the 60S subunit. The protein, which shares sequence similarity with yeast ribosomal protein L44, belongs to the L44E (L36AE) family of ribosomal proteins. This gene and the human gene officially named ribosomal protein L36a (RPL36A) encode nearly identical proteins; however, they are distinct genes. Although the name of this gene has been referred to as ribosomal protein L36a (RPL36A), its official name is ribosomal protein L36a-like (RPL36AL). As is typical for genes encoding ribosomal proteins, there are multiple processed pseudogenes of this gene



dispersed through the genome. [provided by RefSeq, Jul 20

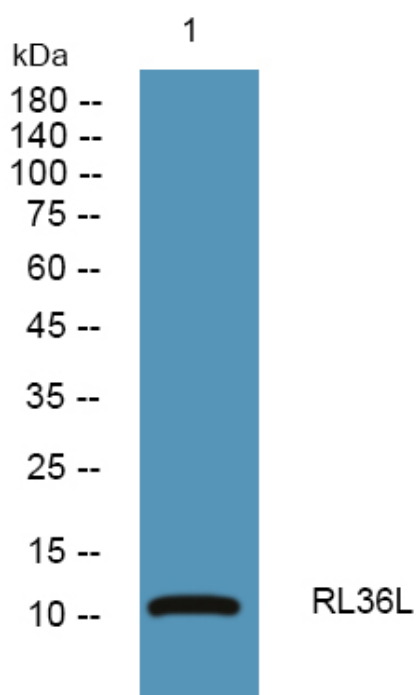
**matters needing attention**

Avoid repeated freezing and thawing!

**Usage suggestions**

This product can be used in immunological reaction related experiments. For more information, please consult technical personnel.

## Products Images



Western blot analysis of lysates from HCT116 cells, primary antibody was diluted at 1:1000, 4° over night