



# RS24 Polyclonal Antibody

<b>Catalog No</b>	YP-Ab-05240
<b>Isotype</b>	IgG
<b>Reactivity</b>	Human;Mouse;Rat
<b>Applications</b>	WB;ELISA
<b>Gene Name</b>	RPS24
<b>Protein Name</b>	40S ribosomal protein S24
<b>Immunogen</b>	Synthesized peptide derived from human protein . at AA range: 50-130
<b>Specificity</b>	RS24 Polyclonal Antibody detects endogenous levels of protein.
<b>Formulation</b>	Liquid in PBS containing 50% glycerol, and 0.02% sodium azide.
<b>Source</b>	Polyclonal, Rabbit,IgG
<b>Purification</b>	The antibody was affinity-purified from rabbit antiserum by affinity-chromatography using epitope-specific immunogen.
<b>Dilution</b>	WB 1:500-2000 ELISA 1:5000-20000
<b>Concentration</b>	1 mg/ml
<b>Purity</b>	≥90%
<b>Storage Stability</b>	-20°C/1 year
<b>Synonyms</b>	
<b>Observed Band</b>	14kD
<b>Cell Pathway</b>	nucleus,nucleoplasm,cytoplasm,cytosol,ribosome,small ribosomal subunit,membrane,cytosolic small ribosomal subunit,
<b>Tissue Specificity</b>	Mature tissues, such as adult brain, skeletal muscle, heart, and kidney, express low levels, whereas tissues and organs with significant populations of proliferating cells, such as fetal brain, placenta, bone marrow, and various glandular organs, contain significantly higher levels.
<b>Function</b>	disease:Defects in RPS24 are the cause of Diamond-Blackfan anemia type 3 (DBA3) [MIM:610629]. DBA3 is a form of Diamond-Blackfan anemia, a congenital non-regenerative hypoplastic anemia that usually presents early in infancy. Diamond-Blackfan anemia is characterized by a moderate to severe macrocytic anemia, erythroblastopenia, and an increased risk of malignancy. 30 to 40% of Diamond-Blackfan anemia patients present with short stature and congenital anomalies, the most frequent being craniofacial (Pierre-Robin syndrome and cleft palate), thumb and urogenital anomalies.,function:Required for processing of pre-rRNA and maturation of 40S ribosomal subunits.,similarity:Belongs to the ribosomal protein S24e family.,tissue specificity:Mature tissues, such as adult brain, skeletal muscle, heart, and kidney, express low levels, whereas tissues and organs with significant populations of prolifer



## Background

Ribosomes, the organelles that catalyze protein synthesis, consist of a small 40S subunit and a large 60S subunit. Together these subunits are composed of 4 RNA species and approximately 80 structurally distinct proteins. This gene encodes a ribosomal protein that is a component of the 40S subunit. The protein belongs to the S24E family of ribosomal proteins. It is located in the cytoplasm. Multiple transcript variants encoding different isoforms have been found for this gene. As is typical for genes encoding ribosomal proteins, there are multiple processed pseudogenes of this gene dispersed through the genome. Mutations in this gene result in Diamond-Blackfan anemia. [provided by RefSeq, Nov 2008],

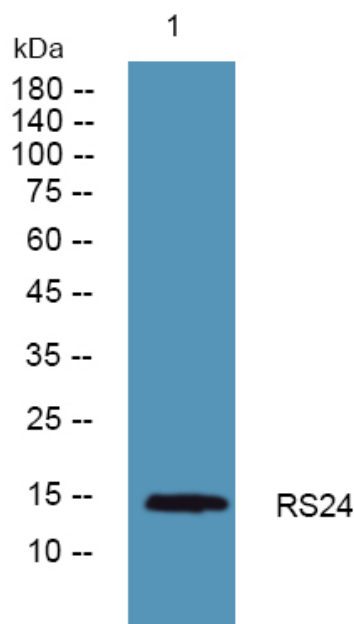
## matters needing attention

Avoid repeated freezing and thawing!

## Usage suggestions

This product can be used in immunological reaction related experiments. For more information, please consult technical personnel.

## Products Images



Western blot analysis of lysates from HCT116 cells, primary antibody was diluted at 1:1000, 4° over night