



# RM43 Polyclonal Antibody

<b>Catalog No</b>	YP-Ab-05232
<b>Isotype</b>	IgG
<b>Reactivity</b>	Human;Rat;Mouse;
<b>Applications</b>	WB;ELISA
<b>Gene Name</b>	MRPL43
<b>Protein Name</b>	39S ribosomal protein L43, mitochondrial (L43mt) (MRP-L43) (Mitochondrial ribosomal protein bMRP36a)
<b>Immunogen</b>	Synthesized peptide derived from human protein . at AA range: 120-200
<b>Specificity</b>	RM43 Polyclonal Antibody detects endogenous levels of protein.
<b>Formulation</b>	Liquid in PBS containing 50% glycerol, and 0.02% sodium azide.
<b>Source</b>	Polyclonal, Rabbit,IgG
<b>Purification</b>	The antibody was affinity-purified from rabbit antiserum by affinity-chromatography using epitope-specific immunogen.
<b>Dilution</b>	WB 1:500-2000 ELISA 1:5000-20000
<b>Concentration</b>	1 mg/ml
<b>Purity</b>	≥90%
<b>Storage Stability</b>	-20°C/1 year
<b>Synonyms</b>	
<b>Observed Band</b>	23kD
<b>Cell Pathway</b>	Mitochondrion .
<b>Tissue Specificity</b>	High relative levels in skeletal muscle and testis. Lower levels of expression in the heart, brain, placenta, lung, liver, kidney, pancreas, spleen, thymus, prostate, ovary, small intestine, colon and leukocytes. Expression is coregulated with TWNK.
<b>Function</b>	similarity:Belongs to the ribosomal protein S25/L51 family.,tissue specificity:High relative levels in skeletal muscle and testis. Lower levels of expression in the heart, brain, placenta, lung, liver, kidney, pancreas, spleen, thymus, prostate, ovary, small intestine, colon and leukocytes. Expression is coregulated with PEO1.,
<b>Background</b>	Mammalian mitochondrial ribosomal proteins are encoded by nuclear genes and help in protein synthesis within the mitochondrion. Mitochondrial ribosomes (mitoribosomes) consist of a small 28S subunit and a large 39S subunit. They have an estimated 75% protein to rRNA composition compared to prokaryotic ribosomes, where this ratio is reversed. Another difference between mammalian mitoribosomes and prokaryotic ribosomes is that the latter contain a 5S rRNA. Among different species, the proteins comprising the mitoribosome differ greatly in sequence, and sometimes in biochemical properties, which prevents easy



recognition by sequence homology. This gene encodes a 39S subunit protein. This gene and the gene for a semaphorin class 4 protein (SEMA4G) overlap at map location 10q24.31 and are transcribed in opposite directions. Sequence analysis identified multiple transcript variants encodin

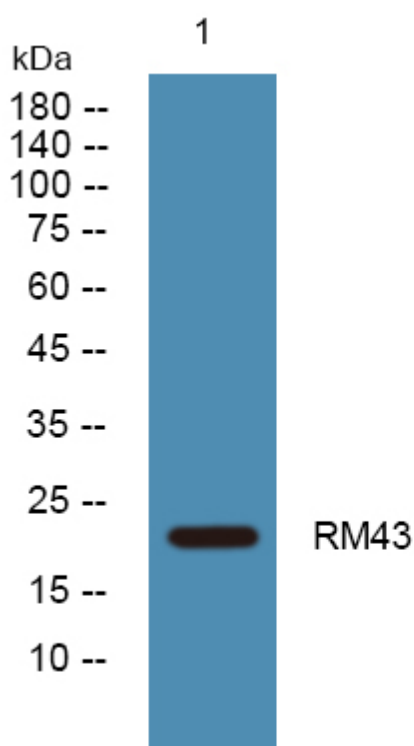
**matters needing attention**

Avoid repeated freezing and thawing!

**Usage suggestions**

This product can be used in immunological reaction related experiments. For more information, please consult technical personnel.

**Products Images**



Western blot analysis of lysates from PC12 cells, primary antibody was diluted at 1:1000, 4° over night