

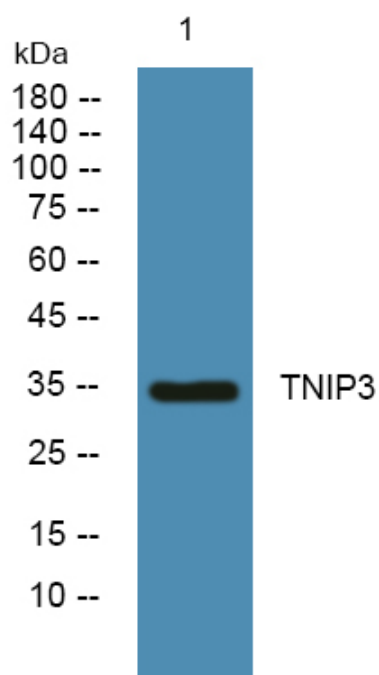


TNIP3 Polyclonal Antibody

| | |
|----------------------------------|---|
| Catalog No | YP-Ab-05207 |
| Isotype | IgG |
| Reactivity | Human;Rat;Mouse; |
| Applications | WB;ELISA |
| Gene Name | TNIP3 ABIN3 LIND |
| Protein Name | TNFAIP3-interacting protein 3 (A20-binding inhibitor of NF-kappa-B activation 3) (ABIN-3) (Listeria-induced gene protein) |
| Immunogen | Synthesized peptide derived from human protein . at AA range: 40-120 |
| Specificity | TNIP3 Polyclonal Antibody detects endogenous levels of protein. |
| Formulation | Liquid in PBS containing 50% glycerol, and 0.02% sodium azide. |
| Source | Polyclonal, Rabbit,IgG |
| Purification | The antibody was affinity-purified from rabbit antiserum by affinity-chromatography using epitope-specific immunogen. |
| Dilution | WB 1:500-2000 ELISA 1:5000-20000 |
| Concentration | 1 mg/ml |
| Purity | ≥90% |
| Storage Stability | -20°C/1 year |
| Synonyms | |
| Observed Band | 35kD |
| Cell Pathway | |
| Tissue Specificity | Highly expressed in lung, lymph node, thymus and fetal liver. Expressed at lower levels in bone marrow, brain, kidney, spleen, leukocytes and tonsils. Could be detected in heart, salivary gland, adrenal gland, pancreas, ovary and fetal brain. High levels detected in liver, colon, small intestine, muscle, stomach, testis, placenta, thyroid, uterus, prostate, skin and PBL. |
| Function | induction:By Listeria infection. Expression is slightly down-regulated by dexamethasone and slightly up-regulated by IL-10.,tissue specificity:Highly expressed in lung, lymph node, thymus and fetal liver. Expressed at lower levels in brain, spleen, leukocytes and tonsils., |
| Background | induction:By Listeria infection. Expression is slightly down-regulated by dexamethasone and slightly up-regulated by IL-10.,tissue specificity:Highly expressed in lung, lymph node, thymus and fetal liver. Expressed at lower levels in brain, spleen, leukocytes and tonsils., |
| matters needing attention | Avoid repeated freezing and thawing! |

**Usage suggestions**

This product can be used in immunological reaction related experiments. For more information, please consult technical personnel.

Products Images

Western blot analysis of lysates from K562 cells,
primary antibody was diluted at 1:1000, 4° over night